



**DAVANTI<sup>®</sup>**  
**TYRES**

LEADING THE WAY



Product Catalogue  
**2022/23**



**RESEARCHED,  
DEVELOPED  
& TESTED  
AROUND  
THE WORLD**

---

**LEADING THE WAY**  
[www.davanti-tyres.com](http://www.davanti-tyres.com)





# CONTENTS

INTRODUCTION	4
CERTIFICATES AND ACCREDITATION	5
EVERTON FC PARTNERSHIP	6-7
SIR CHRIS HOY MBE	8
WIGAN WARRIORS RLFC PARTNERSHIP	9
AUTÓDROMO INTERNACIONAL DO ALGARVE PARTNERSHIP	10-11
EDD COBLEY - DAVANTI AMBASSADOR	12
STERLING AUTOMOTIVE PARTNERSHIP	13
TESTING AND BENCHMARKING	14-15
TEST DISCIPLINES - SUMMER	16
TEST DISCIPLINES - WINTER	17
INDEPENDENT TESTING	18-19
TYRE RANGE INTRODUCTION	20-21
DX240®	22-23
DX390®	24-25
DX640®	26-29
PROTOURA® SPORT	30-31
DSP® RUNFLAT	32-33
DX740® H/T	34-35
DX420®	36-37
DX440®	38-39
TERRATOURA® A/T	40-41
WINTOURA®	42-43
WINTOURA® +	44-45
WINTOURA® SUV	46-47
WINTOURA® VAN	48-49
ALLTOURA®	50-51
ALLTOURA® H/T	52-53
VANTOURA® 4-SEASONS	54-55
DAVANTI TECHNICAL PRODUCT FEATURES	56-57
SPEED RATINGS & LOAD INDEX CHARTS	58-59



# ABOUT DAVANTI

## LEADING THE WAY WITH A NEW GENERATION OF TYRES

DESIGNED IN  
EUROPE



**Designed in Europe, Davanti utilises enhanced silica compounds and innovative tread designs to deliver longevity, great handling and reliability across a tyre range which includes small cars, UHP, SUV, van, taxi and all-terrain.**

Every Davanti tyre is subjected to a punishing testing regime which exceeds the standards set out by industry rating schemes including EU labelling and UTQG, which it must pass before going into full production.

With specialist fitments including SUV, the all-terrain Terratoura, UHP, small passenger car, van and Wintoura winter range, Davanti has developed a portfolio to meet every driver's need.

In the same way our brand package has been designed to meet every distributor's need. Our comprehensive dealer support programme and brand partnerships work together to offer global Davanti partners a substantial competitive advantage. Join the Davanti team today and lead the way.

- Premium quality and reliability
- Fast, agile research and development
- Competitive pricing
- Extensive product range
- Continuous range development
- Exceptional EU labelling results
- Full market protection
- Access to dealer and retailer support programmes
- Marketing fund programme
- Tyre Life Guarantee
- Efficient order fulfilment

### Italiano

Progettato in Europa, Davanti utilizza mescole avanzate a base di silice e disegni innovativi del battistrada per offrire longevità, eccellente maneggevolezza ed affidabilità in tutta la gamma (Pneumatici per Autovetture, UHP, SUV, Trasporto Leggero, Taxi e All-Terrain).

Prima di essere prodotto, ogni pneumatico Davanti è soggetto ad una serie rigorosa di test che vanno al di là degli standard obbligatori per ottemperare le norme di classificazione del settore, come le etichette europee e l'UTQG.

Davanti ha sviluppato una gamma che risponde al bisogno di ogni utente, includendo misure speciali per SUV, All-Terrain Terratoura, UHP, Autovetture, Furgoni e la gamma invernale Wintoura.

### Deutsch

Davanti verwendet für seine Produkte, welche in Europa entworfen und entwickelt werden, verbesserte Silica-Gummimischungen sowie eine innovative Profilgestaltung. Dadurch wird eine lange Lebensdauer gewährleistet, ebenso wie vorbildliche Handlingeigenschaften und eine hohe Zuverlässigkeit für die komplette Produktpalette an Reifen vom Kleinwagen, UHP, SUV, Transporter, Taxi bis hin zu All-Terrain.

Jeder Davanti-Reifen wird einem hoch anspruchsvollen Testverfahren unterzogen, welches die von der Industrie geforderten Normen übertrifft. Erst nach erfolgreich bestandenen Test des EU-Reifen-Labels und der UTQG-Kennzeichnung gehen die Reifen in die serielle Fertigung.

Das Davanti-Portfolio deckt mit seinen zahlreichen speziellen Dimensionen im Bereich SUV, All-Terrain Terratoura, UHP, Kleinwagen, Transporter und dem Wintoura-Wintersortiment die Bedürfnisse jedes Fahrers ab.

### Español

Diseñado en Europa, Davanti utiliza un compuesto de sílice avanzado y un diseño innovador de la banda para brindar longevidad, excelente maniobrabilidad y fiabilidad en toda la gama, incluyendo neumáticos para turismos pequeños, UHP, SUV, camionetas, taxis y todoterrenos.

Antes de su producción, cada Davanti es sometido a una rigurosa serie de pruebas que superan los estándares requeridos por las normas de clasificación de la industria, como las etiquetas europeas y el UTQG.

Davanti ha desarrollado una gama de productos para cumplir con las exigencias de cada conductor, incluyendo medidas especializadas para SUV, todoterrenos Terratoura, UHP, turismos, camionetas, taxis y la gama de invierno.



# CERTIFICATES AND ACCREDITATION

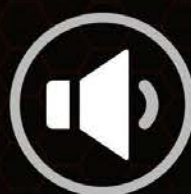
**STRINGENT INDEPENDENT TESTING AND CERTIFICATIONS VERIFY DAVANTI'S QUALITY**



E-mark  
certificate

**DOT**

DOT  
certificate



E-sound  
certificate



GSO  
certificate



SONCAP  
certificate



INMETRO  
certificate



C.H.A.S  
certificate



SASO  
certificate



ISO 14001  
certificate



OHSAS 18001  
certificate



ISO 9001  
certificate



ISO/TS16949:  
2009 certificate



SGS Colombia  
certificate



# EVERTON FC

## AS THE OFFICIAL TYRE PARTNER OF EVERTON FOOTBALL CLUB, DAVANTI TYRES HAS DEVELOPED A POWERFUL GLOBAL BRAND POSITION.

The exclusivity of a Premier League partnership has had a significant impact on the establishment of Davanti as a recognisable tyre brand on an international scale.

From branded access to superstars from the world's top national teams to the opportunity to feature in the world's most popular video game series - EA Sports FIFA - Davanti's relationship with the Blues has helped the brand accelerate recognition, both inside and outside the UK, by placing it in front of a worldwide audience.

Working with the club Davanti has engaged and secured new customers and created a suite of eye catching branding and social media content that has enhanced its global brand position and forged strong associations with dealers and retailers in key markets.



## MAKE IT HAPPEN

### Italiano

Everton FC

COME PRODUTTORE DI PNEUMATICI, PARTNER UFFICIALE DELL'EVERTON FOOTBALL CLUB, DAVANTI TIRES HA SVILUPPATO UN POTENTE POSIZIONAMENTO DEL MARCHIO.

L'esclusività di una collaborazione con un club di Premier League ha avuto un impatto significativo sullo sviluppo di Davanti come marchio rinomato a livello internazionale.

Dall'accesso griffato a superstar internazionali delle migliori squadre nazionali all'opportunità di comparire nelle più celebri serie di videogiochi - EA Sports FIFA - il rapporto tra Davanti e i Blues ha agevolato il marchio ad accrescere la propria reputazione, all'interno e all'esterno del Regno Unito, imponendosi di fronte al pubblico mondiale.

Collaborando con il club, Davanti ha catturato nuovi clienti, nonché ha creato una suite di accattivanti marchi e contenuti sui social media che ha migliorato il posizionamento globale del marchio e dato vita a solide collaborazioni con grossisti e rivenditori nei principali mercati.

### Deutsch

Everton FC

ALS OFFIZIELLER REIFENPARTNER DES FUSSBALLCLUBS EVERTON KONNTE SICH DIE REIFENMARKE DAVANTI EINE STARKE GLOBALE MARKENPOSITION SICHERN.

Die Exklusivität einer Partnerschaft in der Premier League hatte einen bedeutenden Einfluss auf die Etablierung von Davanti als eine international anerkannte Reifenmarke.

Vom Markenzugang zu Superstars der weltweit besten Nationalmannschaften bis hin zur Möglichkeit, in der populärsten Videospielreihe der Welt - EA Sports FIFA - aufzutreten, hat Davantis Beziehung zu den Blues der Marke zu einer schnelleren Anerkennung innerhalb und außerhalb Großbritanniens verholfen, indem sie vor einem weltweiten Publikum Bekanntheit erzielte.

Dank der Zusammenarbeit mit dem Club konnte Davanti neue Kunden gewinnen und binden sowie mithilfe einer Reihe von auffälligen Marken- und Social-Media-Inhalten die globale Markenposition des Unternehmens stärken und starke Verbindungen zu Händlern und Einzelhändlern in den Schlüsselmärkten schaffen.

### Español

Everton FC

COMO PATROCINADOR OFICIAL DEL EVERTON, LA MARCA DAVANTI TIRES HA LOGRADO POSICIONARSE CON GRAN FUERZA EN EL PANORAMA MUNDIAL.

La exclusividad de ser socio de un equipo de la Premier League ha tenido un gran impacto en la consagración de Davanti como una marca de neumáticos reconocida a nivel internacional.

Desde acceder gracias a la marca a las superestrellas de los seleccionados más importantes del mundo, hasta la oportunidad de aparecer en las series de videojuegos más populares del mundo, como EA Sports FIFA, la relación de Davanti con «The Blues» ha favorecido que la marca sea reconocida tanto en el Reino Unido como en el extranjero y la haya colocado en el escaparate de una audiencia de alcance mundial.

El trabajar con el club de fútbol inglés ha hecho que Davanti atraiga y consiga nuevos clientes. Además, Davanti ha creado un paquete de contenidos para las redes sociales y de logos muy atractivos, el cual ha realizado su posicionamiento como marca, y ha forjado sólidas relaciones con distribuidores y detallistas en mercados clave.



# MAKE IT HAPPEN

Davanti Tyres has revealed its new vision to offer more exclusive content, rewards and experiences for fans of its brand partners.

Make It Happen brings together all of Davanti's partnerships - Everton FC, Sir Chris Hoy MBE, Autódromo Internacional do Algarve, Wigan Warriors, Dan Zelos, Edd Copley, Larne Football Club and Sterling Automotive - in a super-team focused on delivering exclusive content, incredible giveaways and once-in-a life-time experiences.

Bringing our partnerships together allows us to create an offer unlike any other tyre brand. However you want partnership activation to look, by collaborating and working together, Davanti and our partners will Make It Happen.

From exclusive supercar driving events in Portimão, opportunities for Everton fans to meet their heroes, challenges with Wigan Warriors, off-road training with Edd Copley and premium hospitality available across live events - Make It Happen will open the door to a host of incredible opportunities.





# SIR CHRIS HOY MBE

**PROTOURA** **SPORT** 

## OLYMPIC CYCLING LEGEND AND LE MANS SERIES CHAMPION

# HOY

Davanti Tyres is aiming to outpace the ordinary with motorsport ace, Olympic legend - and new Protoura Sport ambassador - Sir Chris Hoy.

Jointly Great Britain's most successful Olympic athlete of all-time Sir Chris has won six gold medals and 11 cycling World Championships. Since retiring from cycling Sir Chris has successfully transitioned into motorsport, winning the LMP3 LeMans Series championship and making his mark in both the British GT Championship and endurance racing, where he has competed in both the LeMans 24 Hour and the 24 Hours of Silverstone races.

*"I'm so proud to become the brand ambassador for Davanti's Protoura Sport tyre. It's no secret I love driving and motorsport, they have always been a passion of mine. Whether in my cycling or in my motorsport career, I'm always looking for that winning edge. The difference between ordinary and extraordinary."*

*Protoura enhances everything I love about driving - The feeling of a connection to the car, the sensation of speed and control. What Davanti have done with Protoura Sport is explore every avenue of performance to enhance handling, grip, braking and longevity. The result is a tyre that is as equally at home on the track as it is on the road. A true drivers' tyre."*





# WIGAN WARRIORS

## LEGENDARY SUPER LEAGUE SIDE JOINS THE DAVANTI TYRES FAMILY



Davanti Tyres is now the official partner of one of the world's greatest rugby league clubs, Wigan Warriors.

The multi-year partnership gives the Davanti brand another major international platform. The partnership sees Davanti branding featured on the Warriors kit as well as pitchside and in-stadium branding for providing global TV coverage and opportunities to create engaging and unique omni-channel content with high-profile players.

Wigan Warriors are part of Davanti's Make It Happen partnership campaign and support Davanti's objective to enhance its presence both in the UK and internationally.

**Wigan Warriors executive director Kris Radlinski commented:**

*"We are delighted to welcome onboard Davanti Tyres, a brand which like ourselves has built a strong international presence from its headquarters in the North West."*

*"With both parties entering such an exciting period, we look forward to working closely with Davanti Tyres to engage customers and fans with a series of exciting initiatives."*





# AUTÓDROMO INTERNACIONAL DO ALGARVE

## DAVANTI IS PROUD TO BE THE OFFICIAL TYRE PARTNER OF THE AUTÓDROMO INTERNACIONAL DO ALGARVE RACING SCHOOL

**One of the most technically challenging race circuits in the world - the Autódromo Internacional do Algarve in Portimão - is committed to a five-year partnership with Davanti Tyres.**

The circuit, which plays host to the European LeMans Series, 24H Endurance Series, the FIM World Superbike Championship and the Algarve Classic Festival, joined forces with Davanti in 2017, making the brand the official tyre partner of its AIA Racing School until 2022.



**RACING  
SCHOOL**  
autódromo internacional algarve

The Racing School's fleet of cars, including an Alpine A110, Porsche 911 GT3, Porsche Cayman S, Cayman 718 S, Honda Civic Type R, Mercedes A35 AMG, Mercedes C63 AMG, Mercedes GTC AMG, all run on Davanti's DX640 tyre.

As professional drivers regularly reach speeds in excess of 250 km/h on Davanti UHP tyres, they can offer a unique insight into how Davanti tyres perform under sustained, extreme stress - conditions far in excess of what drivers can ever achieve on the road. This frequent professional appraisal provides valuable feedback on the UHP road tyre's performance at the true ragged edge.

AIA Racing School Director, Miguel Praia, said:

*"The tyres have performed impressively well and have been consistent, which anyone who drives at high speed will tell you, is critical."*

*Our drivers are highly qualified professionals and they understand the importance of tyres as a safety feature. They have developed complete confidence in Davanti since we began this partnership, as tyres that handle well and provide all the feedback and control you need to drive safely and well."*

*We are proud to partner with Davanti Tyres."*



**Miguel Praia**  
AIA Racing School Director







# EDD COBLEY

## OFF-ROAD RACING LEGEND EDD COBLEY — OFFICIAL AMBASSADOR OF TERRATOURA A/T

**From a family steeped in off-roading tradition, Edd won the Land Rover Defender Challenge in 2014, 2015 and 2016 in a Bowler-modified racing Defender. In 2015 he also won the Hill Rally Championships.**

He also owns and operates the East of England Land Rover Experience in Corby, working with off-road vehicles every single day.

Having worked with Davanti on the launch of Terratoura, Edd was so impressed with the tyre's performance he not only accepted the role of brand ambassador, he revealed his intention to race off-road using Terratoura in his own custom-built Land Rover Defender 110 doublecab.

# EDD COBLEY

*"I'm really looking forward to racing with Terratoura. Davanti have spent nearly two years developing the tyre from arctic conditions in Finland to searing heat in IDIADA in Spain and it's been benchmarked against some class-leading tyres.*

*Across all surfaces, the snow, the sand, the rock, it doesn't just compete, it excels. It is very versatile. It reacts like a road tyre on the road and it's all-terrain capability off the road is second-to-none.*

”





# STERLING AUTOMOTIVE

## DAVANTI TYRES IS THE OFFICIAL TYRE PARTNER OF PREMIUM CUSTOM VEHICLE HOUSE STERLING AUTOMOTIVE DESIGN

**UK-based Sterling is a design house specialising in reimagining iconic vehicles and enriching them with British style. Their work includes bespoke full-vehicle, premium customisations and lighter-touch enhancements to external bodywork or upholstery.**

If you want your vehicle to make a statement, Sterling has the vision and skill to make that a reality.

Sterling Brand Director Doug Topott said partnering with the brand made perfect sense.

"Davanti and Sterling share many values," he said. "We are both British brands with a similar ethos."

"Sterling aims to take iconic vehicles and inject them with an individual, uniquely British sense of style. We want people to see and recognise a vehicle, but for it to be apparent that it is not like other vehicles. We

make every vehicle special.

"Aesthetically Davanti's range of tyres have exactly the right look to complement Sterling's own design cues. It may seem unusual to consider the look of tyres on a vehicle but they are very visible. When you are creating the lines and shapes that we are, the tyres need to look like they belong and Davanti tyres do."

"The other vital aspect of the partnership is performance. Sterling customers want to stamp their individuality on a vehicle, but they also love driving and they want to get the best performance."

"When we researched Davanti's intensive testing programme and saw the results across their range we knew that this was the right tyre brand for us."

To discover Sterling Automotive visit [www.sterling-automotive.co.uk](http://www.sterling-automotive.co.uk).





# TESTING AND BENCHMARKING

## RESEARCH AND DEVELOPMENT

### Davanti European Development Centre

All Davanti tyres are researched and developed at the exclusive, first class Davanti European Development Centre at Tarragona near Barcelona.

As the most comprehensive summer tyre proving ground in Europe, each tyre concept and prototype is expertly analysed by a technical team and engineers before entering the rigorous testing process.

Even after Davanti products have launched into the market, they are constantly improving with further developmental testing to ensure each tyre complies with changing industry standards and that it achieves optimum performance levels.



### TREAD - Excellence guaranteed by independent testing

**TREAD** »  
TYRE • RESEARCH • ENGINEERING • DEVELOPMENT

After the initial development stage, all Davanti tyres are then tested objectively using a number of innovative techniques by independent British automotive testing organisation, TREAD.

Specialising in subjective and objective vehicle assessment at proving grounds worldwide, TREAD subjects tyres to the most extreme challenges, pushing them beyond their limits to establish quality of performance and resilience. This demonstrates the upper limits of a tyre's capability, showing how it compares to rival tyres in identical tests.

The data gained from testing, combined with subjective driver assessment, is then used in the development phase to refine and modify tyre designs.



#### Key Testing Criteria at IDIADA Includes:

- Subjective and objective tyre testing
- Aquaplaning/Hydroplaning
- Subjective and objective vehicle testing
- New test methods
- Data acquisition
- Limit handling evaluation
- Winter testing (snow/ice)
- Off-road testing (gravel, mud, grass)



## PERFORMANCE MATTERS. WE DEMAND OPTIMUM PERFORMANCE FROM EVERY DAVANTI TYRE

**Applus<sup>+</sup>**  
**IDIADA**

### Summer Testing

Applus+ IDIADA provides design, testing, engineering and homologation services to the automotive industry worldwide.

IDIADA boasts some of the best summer testing facilities in the world. An international team of more than 2,400 engineers and technical experts ensure all testing carried out at the site is completed to a high standard.

Each Davanti tyre is stringently tested in a series of wet and dry tests at these proving grounds to ensure safe and predictable handling. They are continuously subjected to benchmark development regimes that progressively harness product performance capabilities and enable the tyres to perform at the top of their class.



### Winter Testing

Test World, a part of the Millbrook Group, specialises in providing testing, validation and engineering services for the automotive industry in some of Finland's most demanding winter conditions. It is the ideal location to put each Davanti tyre through its paces, providing consistent and repeatable test results on the following:

- Ice acceleration
- Ice braking + traction
- Ice handling
- Snow acceleration
- Snow handling
- Snow braking

Testing at this facility also allows Davanti products to earn 3PMSF certification, which proves they have been tested under harsh and demanding winter conditions in accordance with the requirements of ECE Regulation 661/2009.

**TEST WORLD**  
A MILLBROOK GROUP COMPANY





# TEST DISCIPLINES



## DRY HANDLING

Dry handling is not only about high speed performance. Tyres should be over-engineered to remain safe when pushed beyond their limits and their road performance should be effortless and predictable. For this purpose, the test driver evaluates the reaction to steering input and cornering as well as rear axle stability. They look for how tyres react to changes in direction and pace, the amount of steering lock required and for any loss of grip to be progressive.



## DRY BRAKING

Drivers don't have to make an emergency stop very often, but when they do, they want to know they can rely on their tyres to bring their car to a halt in a safe and composed manner.

Dry braking tests consist of driving a vehicle at 110km/h, then applying the brakes. The distance covered by the car between 100km/h and a complete stop is measured by ultra-precise GPS equipment.



## WET HANDLING

Wet handling testing consists of both objective and subjective tests. The objective test is a lap time of a wet handling circuit. This is a wide ranging test that takes into account a number of tyre performance attributes, such as the tyre's ability to transfer the car's power to the road, and ultimately the amount of control the driver has.

The subjective test goes beyond the lap time to give a more significant insight into the tyre's performance. The test driver applies a rating to a number of parameters, based on their knowledge and experience. They are focusing on driver experience - looking for safe, predictable handling and effortless road performance.



## WET BRAKING

The wet braking test consists of driving a vehicle at 110km/h into a heavily watered section of track, then applying the brakes. The distance covered by the car between 100km/h and a complete stop is measured by ultra-precise GPS equipment.



## LONGITUDINAL AQUAPLANING

The speed at which a tyre is deemed to be fully aquaplaning is when the driven front wheel speed is 15% faster than the speed the vehicle is actually travelling, as measured by a GPS device. The higher the speed, the better a tyre is at preventing aquaplaning.



## ICE CIRCLES

The vehicle is lined up at the edge of the 50 metre diameter circle, a fixed amount of steering lock is applied and the vehicle is accelerated until the limits of lateral grip are exceeded and the vehicle deviates from the intended path.

The result is taken from an average of several laps. This is a crucial measurement of lateral grip on ice.



## ICE TRACTION + BRAKING

Preventing that dreaded moment when you hit the brakes on ice and the vehicle has insufficient grip to safely slow down is a key expectation of winter tyres.

Ice traction is tested by measuring the time taken to accelerate to a predetermined speed. The ice braking test measures the distance covered when slowing from this speed to a stop. These tests are carried out on a carefully prepared and controlled brushed ice surface.



## ICE HANDLING

The 1,300 metre track at Ivalo is fast and flowing and really tests the tyres. A mix of tightening turns and hairpins - negotiated with all electronic driver aids disabled - is a real challenge for driver, car and tyres. The track is graded between runs and the result is an average of lap times.



## SNOW HANDLING

Snow handling is tested on Test World's demanding Alpine Circuit. Featuring tight hairpins, long straights, steep elevation changes and off-camber corners, this facility goes far beyond the typical conditions encountered by most motorists.

Our testing consists of repeated timed runs on this track, to ensure the performance of our tyres consistently and reliably meet and exceed the performance requirements of drivers on snow-covered roads.



## SNOW HILL CLIMB

Traction on low grip surfaces is a key performance criterion for winter tyres. The snow hill climb test consists of measuring the distance taken to accelerate to a predetermined speed on a consistent incline.





# INDEPENDENT TESTING



Comparative mileage tests are often omitted from tyre testing. But for consumers, higher mileage returns mean better value for money. From compounds to tyre engineering, design and manufacturing, Davanti is committed to delivering exceptional mileage capability and outstanding performance in all weather conditions.

**DEKRA** is a world-renowned automotive safety and evaluation organisation which operates in more than 60 countries worldwide. Its services include vehicle-manufacturer homologation testing, safety consultancy and product certification.



Davanti submitted Protoura Sport to DEKRA for open road wear testing over 20,000km on a mix of motorway and standard roads. The evaluation was conducted using a premium vehicle manufacturer's approved OE testing programme.

## Test Information

<b>Tyre Size</b>	245/40R18 97Y XL Davanti Protoura Sport	<b>Total Distance</b>	20,000 km
<b>Test Vehicle</b>	Audi A4; 2.0 TDI 110 kW	<b>Vehicle Load</b>	Partially loaded, 40 kg in boot as well as a passenger weight dummy of 75 kg
<b>Route</b>	Approx. 50% country road and approx. 50% motorway	<b>Tyre Pressure</b>	2.5 bars

### Fastest Wearing Point Projection

Front Axle Average	40,385 km	25,094 miles
Rear Axle Average	76,214 km	47,357 miles
Overall Average	58,299 km	36,225 miles



## A KEY MEASURE OF A TYRE'S PERFORMANCE IS MILEAGE. DAVANTI DELIVERS HIGH PERFORMANCE AT LOW COST PER MILE



IFV is an independent testing organisation based in Lower Saxony, Germany. For over 30 years it has provided tyre wear evaluation for manufacturers including Audi, VW and Bentley. In addition, the world's leading tyre manufacturers commission IFV to perform wear testing and evaluate their products' mileage capabilities.



Davanti submitted DX390 to IFV to perform open road wear testing and evaluate product mileage capabilities. The evaluation was conducted using a premium vehicle manufacturer's approved OE testing programme.

### Test Information

<b>Tyre Size</b>	205/55R16 91V Davanti DX390	<b>Vehicle Load</b>	Partially loaded, 40 kg in boot as well as a passenger weight dummy of 75 kg
<b>Test Vehicle</b>	Volkswagen Golf VII; 2.0 TDI 110 kW	<b>Tyre Pressure</b>	2.4 bars
<b>Route</b>	Approx. 50% country road and approx. 50% motorway	<b>Tester's Remarks</b>	With these wear results, approval from a leading automobile manufacturer would be expected
<b>Total Distance</b>	20,000 km		

Davanti DX390	Front Left	Front Right	Rear Left	Rear Right
Tread Depth At: 20,001 km	4.5 mm	4.4 mm	6.0 mm	6.0 mm
Wear Rate / 1000 km	0.132 mm	0.136 mm	0.057 mm	0.056 mm
Remaining Running Dist. (km)	21,647	20,717	77,592	78,348
Total Running Dist. (km)	41,648	40,718	97,593	98,349
Total Running Dist. (miles)	25,878	25,300	60,641	61,111







# DAVANTI TYRE RANGE





# DX240®



## LOW-NOISE PASSENGER CAR TYRE FOR SMALL VEHICLES WITH EXCEPTIONAL WET AND DRY GRIP

**Designed for smaller passenger car applications, the DX240 provides exceptional wet and dry grip with high levels of straight line and cornering traction.**

- Three longitudinal grooves channel water away from the contact area and provide drainage channels for safe wet weather driving
- Inner shoulder area contains open sipes to disperse water in wet conditions, whilst the angular bend in the outer shoulder helps to contain noise and reduce resonance for a quiet drive
- The outer shoulder consists of a contained horizontal groove to actively contain sound and provide a progressive drive with high levels of grip when cornering



### Italiano

#### DX240

Pneumatico a bassa rumorosità per autovetture di dimensioni ridotte con eccellente aderenza in tutte le condizioni climatiche.

Progettato per applicazioni su autovetture di dimensioni più ridotte, lo pneumatico DX240 offre un'eccezionale aderenza sia sull'asciutto sia sul bagnato con elevati livelli di trazione in curva e in rettilineo:

- Tre scanalature longitudinali consentono di rimuovere l'acqua dalla zona di contatto offrendo canali di drenaggio per una guida sul bagnato in totale sicurezza
- L'area interna delle spalle contiene aperture laterali per drenare l'acqua in condizioni umide, mentre la piega angolare nella spalla esterna consente di attenuare il rumore e ridurre la risonanza per una guida silenziosa
- La spalla esterna presenta una scanalatura orizzontale per attenuare in maniera attiva il rumore e fornire una guida progressiva con elevati livelli di aderenza in curva

### Deutsch

#### DX240

Der geräuscharme Reifen für PKW mit hervorragender Bodenhaftung bei jedem Wetter.

Der DX240, wurde für den Einsatz auf kleineren PKW entwickelt und bietet auf trockener und nasser Straße hervorragende Haftungseigenschaften mit gleichzeitig hoher Traktion und Kontrollierbarkeit - sowohl auf gerader Strecke als auch in Kurven:

- Drei Längsrillen leiten das Wasser von der Aufstandsfläche ab und bilden so Ablaufkanäle für eine sichere Fahrt auf nasser Straße.
- Die Innenschulter verfügt über offene Lamellen, um Wasser bei Nässe effektiv abzuleiten, während die abgeschrägte Außenschulter hilft, Geräusche einzudämmen und Resonanzerscheinungen zu reduzieren. Damit ist eine geräuscharme Fahrt garantiert.
- Die Außenschulter ist durch eine spezielle Rippe verbunden und minimiert dadurch den Geräuschpegel aktiv. Ebenso erhöht sie die Traktion und das Gripniveau in den Kurven.

### Español

#### DX240

Neumático silencioso para turismos compactos con un agarre excepcional en cualquier condición climática.

El neumático DX240, diseñado para turismos pequeños, proporciona un agarre excepcional sobre firme húmedo y seco con elevados niveles de tracción en línea recta y en curvas:

- Tres ranuras longitudinales desalojan el agua de la zona de contacto y proporcionan canales de drenaje para conseguir una conducción segura en condiciones de lluvia.
- La zona del hombro interior incorpora laminillas abiertas para dispersar el agua en condiciones de humedad, mientras que el codo angular del hombro exterior contribuye a amortiguar el ruido y reducir la resonancia para lograr una conducción más silenciosa.
- El hombro exterior consta de una ranura horizontal que amortigua activamente el ruido y proporciona una conducción progresiva con elevados niveles de agarre en curva.



SIZE RANGE **13" - 14"**SPEED RATINGS **T / H / V**NO. OF SIZES **11**PATTERN TYPE **ASYMMETRIC**

FUEL

WET GRIP

NOISE

UTQG

**C****B-C****69dB****TREAD WEAR 420, TRACTION A, TEMPERATURE A**

	SECTION	PROFILE	RIM	LI/SR	EXTRA LOAD	CLASS	ROLLING RESISTANCE	WET GRIP	NOISE dB	NOISE BAR	EAN
<b>13"</b>	155	65	13	73T	-	C1	C	C	69dB	B	5060408161203
	155	70	13	75T	-	C1	C	C	69dB	B	5060408161517
	155	80	13	79T	-	C1	C	C	69dB	B	5060408161531
	165	65	13	77T	-	C1	C	C	69dB	B	5060408161067
	165	70	13	79T	-	C1	C	B	69dB	B	5060408164853
	175	70	13	82T	-	C1	C	C	69dB	B	5060408161050
<b>14"</b>	155	65	14	75T	-	C1	C	C	69dB	B	5060408161142
	165	65	14	79H	-	C1	C	C	79dB	B	5060408161524
	165	65	14	79T	-	C1	C	C	69dB	B	5060408161562
	185	55	14	80V	-	C1	C	B	69dB	B	5060408162200
	185	70	14	88H	-	C1	C	C	69dB	B	5060408161074

Regulation (EU) 2020/740





# DX390®



## OUTSTANDING VERSATILE PERFORMANCE TYRE FOR A FUEL-EFFICIENT AND COMFORTABLE DRIVE

**The DX390 is a high performance asymmetric tyre for compact vehicles and smaller passenger cars. The dynamic design offers a responsive drive in all conditions.**

- Four wide and deep groove channels designed for optimal drainage and excellent handling in wet weather
- Three main blocks feature a 3D design that dynamically changes performance as the tread depth decreases
- Varying tread block pitch and compartmentalising grooves work together to minimise and contain noise
- Flared block sections combine with a continual longitudinal band to provide excellent traction
- Integrated rim protection to prevent wheel damage



### Italiano

**DX390**  
Pneumatico ad elevate prestazioni ed estremamente versatile per una guida comoda a basso consumo di carburante.

DX390 è uno pneumatico ad alte prestazioni per le autovetture di dimensioni più ridotte. Il design dinamico offre una guida reattiva in ogni condizione:

- Quattro, ampi e profondi canali di scanalature studiati per un drenaggio ottimale e un'eccellente manovrabilità sul bagnato.
- Tre blocchi principali con design in 3D che modifica in modo dinamico le prestazioni con la riduzione dello spessore del battistrada.
- Il passo variabile dei blocchi del battistrada e le scanalature compartimentalizzate lavorano insieme per ridurre al minimo e contenere il rumore.
- Le sezioni svasate dei blocchi delle spalle uniscono a una banda longitudinale continua per offrire un'eccellente trazione.
- Protezione integrata del cerchio per evitare danni alla ruota.

### Deutsch

**DX390**  
Ein extrem vielseitiger Hochleistungsreifen für spritsparendes, komfortables Fahren.

Der DX390 ist ein HP-Reifen für der Kompaktklasse. Das dynamische Design ermöglicht bei allen Bedingungen ein außergewöhnlich gutes Ansprechverhalten:

- Die vier tiefen und breiten Profilkänäle dienen der optimalen Wasserverdrängung und ermöglichen auch bei Nässe ein ausgezeichnetes Fahrverhalten.
- Die drei Hauptprofilblöcke verfügen über ein innovatives 3D-Design, durch das die Reifenleistung trotz abnehmender Profiltiefe, praktisch gleich hoch bleibt.
- Die spezielle Aufteilung des Profils und die Anordnung der Rillen tragen effizient zur Geräuschkürzung und -dämmung bei.
- Verbreiterte Blockbereiche in den Schultern gewährleisten im Zusammenspiel mit einem durchgängigen Längsstreifen eine ausgezeichnete Bodenhaftung.
- Integrierte Felgenschutzleiste gegen Beschädigungen.

### Español

**DX390**

Neumático de excelente rendimiento con una versatilidad extraordinaria diseñado pensando en el ahorro de combustible y la comodidad en la conducción.

El DX390 es un neumático de alto rendimiento para los turismos más compactos. Su diseño dinámico ofrece una conducción con una respuesta superior en todas las condiciones:

- Cuatro canales anchos y profundos diseñados para conseguir un drenaje óptimo y una excelente maniobrabilidad en condiciones de lluvia.
- Tres bloques principales presentan un diseño tridimensional que cambia el rendimiento dinámicamente a medida que la banda de rodadura se reduce.
- La distinta inclinación de los bloques de la banda en los hombros rodadura y la compartimentación de las entalladuras actúan conjuntamente para minimizar el ruido.
- Las secciones de bloques acampanados se combinan con una banda longitudinal continua para proporcionar una excelente tracción.
- Protección de llanta integrada para prevenir daños en la rueda.



**SIZE RANGE** 14" - 20"  
**SPEED RATINGS** N / T / H / V / W  
**NO. OF SIZES** 60  
**PATTERN TYPE** ASYMMETRIC

**FUEL** B-D  
**WET GRIP** A-C  
**NOISE** 67-69dB  
**UTQG** TREAD WEAR 420, TRACTION A, TEMPERATURE A

**DX390**

	SECTION	PROFILE	RIM	LI/SR	EXTRA LOAD	CLASS	ROLLING RESISTANCE	WET GRIP	NOISE dB	NOISE GRADE	EAN
14"	165	60	14	75H	-	C1	D	C	67dB	A	5060408160008
	165	70	14	81T	-	C1	C	C	67dB	A	5060408160015
	165	70	14	85T	XL	C1	C	C	67dB	A	5060408160022
	175	65	14	82H	-	C1	C	C	67dB	A	5060408160046
	175	65	14	86T	XL	C1	C	C	67dB	A	5060408161555
	175	70	14	84T	-	C1	C	C	67dB	A	5060408160060
	175	70	14	88T	XL	C1	C	C	67dB	A	5060408160077
	185	60	14	82H	-	C1	C	B	67dB	A	5060408160107
	185	65	14	86H	-	C1	C	B	67dB	A	5060408160121
	195	70	14	95H	-	C1	B	B	68dB	A	5060408161289
15"	195	70	14	96N	XL	C1	B	B	68dB	A	5060408161593
	165	60	15	77H	-	C1	C	C	67dB	A	5060408161579
	165	65	15	81T	-	C1	C	C	67dB	A	5060408161005
	175	60	15	81H	-	C1	C	C	67dB	A	5060408160039
	175	65	15	84H	-	C1	C	C	67dB	A	5060408160053
	185	55	15	82V	-	C1	D	B	67dB	A	5060408160084
	185	60	15	84H	-	C1	C	B	67dB	A	5060408162705
	185	60	15	88H	XL	C1	C	B	67dB	A	5060408160114
	185	65	15	88H	-	C1	C	B	67dB	A	5060408160138
	195	50	15	82V	-	C1	D	B	68dB	A	5060408160152
	195	55	15	85V	-	C1	D	B	68dB	A	5060408160169
	195	60	15	88H	-	C1	D	A	68dB	A	5060408160183
	195	60	15	88V	-	C1	D	A	68dB	A	5060408160190
	195	65	15	91H	-	C1	C	A	68dB	A	5060408160206
	195	65	15	91V	-	C1	C	A	68dB	A	5060408161180
	195	65	15	95T	XL	C1	B	A	68dB	A	5060408160213
	205	50	15	86V	-	C1	C	B	68dB	A	5060408162231
	205	55	15	88V	-	C1	C	B	68dB	A	5060408162217
	205	60	15	95V	XL	C1	B	B	69dB	A	5060408162224
	205	65	15	94H	-	C1	B	B	68dB	A	5060408161043
16"	215	65	15	100H	XL	C1	B	B	68dB	A	5060408161241
	215	75	15	100H	-	C1	B	B	68dB	A	5060408164860
	185	50	16	81V	-	C1	C	B	67dB	A	5060408161012
	185	55	16	83H	-	C1	C	B	67dB	A	5060408162736
	185	55	16	87V	XL	C1	C	B	67dB	A	5060408160091
	195	45	16	84V	XL	C1	C	B	68dB	A	5060408160145
	195	50	16	88V	XL	C1	B	B	68dB	A	5060408160695
	195	55	16	87V	-	C1	C	B	68dB	A	5060408160176
	195	60	16	89V	-	C1	C	A	68dB	A	5060408161210
	195	65	16	92V	-	C1	TBC	TBC	TBC	TBC	TBC
	205	45	16	87W	XL	C1	C	B	68dB	A	5060408161029
	205	50	16	91W	XL	C1	B	B	68dB	A	5060408160237
	205	55	16	91V	-	C1	C	A	68dB	A	5060408161173
	205	55	16	94V	XL	C1	C	A	68dB	A	5060408160251
	205	55	16	94W	XL	C1	C	A	68dB	A	5060408160268
	205	60	16	96H	XL	C1	C	B	68dB	A	5060408160275
	205	60	16	96V	XL	C1	C	B	68dB	A	5060408160282
	205	65	16	95H	-	C1	B	B	68dB	A	5060408161296
	215	45	16	90W	XL	C1	B	B	68dB	A	5060408161036
	215	55	16	93V	-	C1	B	B	68dB	A	5060408162774
19"	215	55	16	97W	XL	C1	B	B	68dB	A	5060408160329
	215	60	16	95H	-	C1	B	B	68dB	A	5060408162767
	215	60	16	99H	XL	C1	C	B	68dB	A	5060408160350
	215	65	16	98H	-	C1	B	B	68dB	A	5060408160374
	225	55	16	99W	XL	C1	B	B	69dB	A	5060408162194
	225	60	16	102V	XL	C1	B	B	68dB	A	5060408161340
	205	50	19	94H	XL	C1	C	B	68dB	A	5060408165447
	205	55	19	97V	XL	C1	C	B	68dB	A	5060408164211
20"	195	55	20	95H	XL	C1	C	B	68dB	A	5060408164556
	215	45	20	95W	XL	C1	C	B	68dB	A	5060408164532





# DX640®



## DYNAMICALLY DESIGNED CAR AND SUV TYRE FOR MAXIMUM GRIP AND ULTRA-HIGH PERFORMANCE

**Cutting edge tread design coupled with an advanced silica compound for optimum performance and a responsive drive.**

- Four longitudinal grooves provide optimal water dissipation, enabling superior levels of wet grip
- Asymmetrically designed with a continuous outer band for advanced cornering grip and an inner tapered block design for wet weather traction
- Flared shoulder block layout with compartmentalised grooves actively contains noise and delivers a quiet drive
- Innovative block shapes vary with tread wear providing progressive performance throughout the tyre's life
- Integrated rim protection to prevent wheel damage



### Italiano

#### DX640

Pneumatico UHP per vetture e SUV dinamicamente studiato per garantire massima aderenza e prestazioni di altissima qualità.

Design all'avanguardia del battistrada unito a un'avanzata mescola in silice per prestazioni ottimali e una guida reattiva.

- Quattro scanalature longitudinali offrono un drenaggio ottimale dell'acqua, garantendo livelli superiori di aderenza sul bagnato.
- Design asimmetrico con banda esterna continua per un'avanzata aderenza in curva e design interno affusolato dei blocchi per la trazione sul bagnato.
- Layout svasato delle spalle con scanalature compartimentalizzate per ridurre attivamente il rumore e offrire una guida silenziosa.
- Le forme innovative dei blocchi variano con l'usura del battistrada offrendo prestazioni graduali per tutta la durata dello pneumatico.
- Protezione integrata del cerchio per evitare danni alla ruota.

### Deutsch

#### DX640

Ein UHP-Reifen mit dynamischem Design für Autos und Geländewagen, der eine maximale Haftung und höchste Leistung garantiert.

Hochmodernes Laufflächendesign gepaart mit einer modernen Silikamischung für optimale Leistung und bestes Ansprechverhalten beim Fahren.

- Vier Längsrillen gewährleisten eine optimale Wasserverdrängung und ermöglichen eine überdurchschnittliche Haftung bei Nässe.
- Ein asymmetrisches Design mit einem durchgängigen Streifen an der Außenseite für einen verbesserten Kurven-Grip sowie einem konisch gestalteten Blockdesign auf der Innenseite für gute Haftungseigenschaften bei Nässe.
- Der verbreiterte Schulterblock, versehen mit gezielt patzierten Rillen, reduziert aktiv Geräusche und ermöglicht somit ein ruhiges Fahren.
- Innovative Blockformen variieren entsprechend der Laufflächenabnutzung und gewährleisten somit über die gesamte Lebensdauer des Reifens hinweg eine gleichbleibend hohe Leistung.
- Integrierte Felgenschutzleiste gegen Beschädigungen.

### Español

#### DX640

Neumáticos UHP para turismos y todoterrenos con un diseño dinámico para mejorar el agarre y proporcionar un rendimiento extremo.

El diseño vanguardista de la banda de rodadura unido a un avanzado compuesto de sílice permite conseguir un rendimiento y una maniobrabilidad extraordinarios.

- Cuatro entalladuras longitudinales proporcionan una óptima disipación del agua, permitiendo niveles superiores de agarre en mojado.
- Diseño asimétrico con una banda exterior continua para conseguir un agarre en curva inmejorable y un diseño de bloques cónicos internos que mejora la tracción en invierno y en condiciones de lluvia.
- La disposición de bloques acampanados del flanco con entalladuras compartimentadas reduce activamente el ruido y proporciona una conducción silenciosa.
- Las innovadoras formas de los bloques varían según el desgaste de la banda de rodadura proporcionando un rendimiento progresivo durante toda la vida útil del neumático.
- Protección de llanta integrada para prevenir daños en la rueda.



**SIZE RANGE** 16" - 22"  
**SPEED RATINGS** H / V / W / Y  
**NO. OF SIZES** 126  
**PATTERN TYPE** ASYMMETRIC

**FUEL** B-D  
**WET GRIP** A-B  
**NOISE** 68-71dB  
**UTQG** TREAD WEAR 420, TRACTION A, TEMPERATURE A

**DX640**

	SECTION	PROFILE	RIM	LI/SR	EXTRA LOAD	CLASS	ROLLING RESISTANCE	WET GRIP	NOISE dB	NOISE BAR	EAN
16"	235	60	16	104V	XL	C1	B	B	68dB	A	5060408162262
	205	40	17	84W	XL	C1	C	B	68dB	A	5060408161159
	205	45	17	88W	XL	C1	D	B	68dB	A	5060408160220
	205	50	17	93W	XL	C1	C	B	68dB	A	5060408160244
	205	55	17	95W	XL	C1	B	B	68dB	A	5060408161166
	215	40	17	87W	XL	C1	C	B	68dB	A	5060408160947
	215	45	17	91W	XL	C1	C	B	68dB	A	5060408160299
	215	45	17	91Y	XL	C1	B	B	68dB	A	5060408162439
	215	50	17	95W	XL	C1	C	B	68dB	A	5060408160312
	215	55	17	94V	-	C1	C	B	68dB	A	5060408162750
	215	55	17	98W	XL	C1	C	B	68dB	A	5060408160336
	215	60	17	96H	-	C1	B	B	68dB	A	5060408160367
	225	45	17	91W	-	C1	D	B	70dB	B	5060408162743
	225	45	17	94W	XL	C1	C	A	68dB	A	5060408160404
	225	45	17	94Y	XL	C1	C	A	68dB	A	5060408160411
	225	50	17	94W	-	C1	C	B	68dB	A	5060408164754
	225	50	17	98Y	XL	C1	C	B	68dB	A	5060408160954
	225	55	17	101W	XL	C1	B	B	68dB	A	5060408161616
	225	55	17	97Y	-	C1	B	B	68dB	A	5060408161197
	235	45	17	94W	-	C1	C	B	68dB	A	5060408162781
17"	235	45	17	97W	XL	C1	B	B	68dB	A	5060408160701
	235	50	17	96Y	-	C1	B	B	68dB	A	5060408161265
	235	55	17	103W	XL	C1	B	B	68dB	A	5060408162255
	235	55	17	103Y	XL	C1	B	B	68dB	A	5060408162590
	245	40	17	91Y	-	C1	C	B	68dB	A	5060408162507
	245	40	17	95W	XL	C1	C	B	68dB	A	5060408160497
	245	40	17	95Y	XL	C1	C	B	68dB	A	5060408160503
	245	45	17	99W	XL	C1	B	B	68dB	A	5060408161548
	245	45	17	99Y	XL	C1	B	B	68dB	A	5060408162514
	255	40	17	94Y	-	C1	C	B	70dB	B	5060408162538
	255	40	17	98W	XL	C1	C	B	70dB	A	5060408161395
	285	65	17	116H	-	C1	B	B	71dB	A	5060408164792
18"	215	40	18	89Y	XL	C1	B	B	68dB	A	5060408161234
	215	45	18	93W	XL	C1	B	B	68dB	A	5060408160305
	215	45	18	93Y	XL	C1	B	B	68dB	A	5060408162446
	215	50	18	92W	-	C1	C	B	68dB	A	5060408164761
	215	55	18	99V	XL	C1	B	B	68dB	A	5060408160343
	225	35	18	87Y	XL	C1	C	B	68dB	A	5060408161302
	225	40	18	92W	XL	C1	C	B	68dB	A	5060408160398
	225	40	18	92Y	XL	C1	B	B	68dB	A	5060408160381
	225	45	18	95W	XL	C1	B	A	68dB	A	5060408160428
	225	45	18	95Y	XL	C1	B	A	68dB	A	5060408162453
	235	40	18	91W	-	C1	C	B	68dB	A	5060408162798
	235	40	18	95W	XL	C1	C	B	68dB	A	5060408160459
	235	40	18	95Y	XL	C1	B	B	68dB	A	5060408160442
	235	45	18	98W	XL	C1	B	B	68dB	A	5060408160473
	235	45	18	98Y	XL	C1	B	B	68dB	A	5060408162484
	235	50	18	101W	XL	C1	B	B	68dB	A	5060408161364
	235	55	18	104V	XL	C1	B	B	68dB	A	5060408161371
	235	55	18	104Y	XL	C1	B	B	68dB	A	5060408162491
	245	35	18	92Y	XL	C1	C	B	68dB	A	5060408161272
	245	40	18	97Y	XL	C1	B	B	68dB	A	5060408160510
	245	45	18	100W	XL	C1	B	B	68dB	A	5060408160534
	245	45	18	100Y	XL	C1	B	B	68dB	A	5060408162521
	255	35	18	94W	XL	C1	C	B	70dB	A	5060408160565
	255	35	18	94Y	XL	C1	C	B	70dB	A	5060408160558
	255	40	18	99Y	XL	C1	B	B	70dB	A	5060408161456
	255	45	18	103Y	XL	C1	B	B	70dB	A	5060408161463
	255	55	18	109W	XL	C1	B	B	70dB	A	5060408161401
	265	35	18	97W	XL	C1	C	B	70dB	A	5060408160626
	265	35	18	97Y	XL	C1	C	B	70dB	A	5060408160619
	275	35	18	99Y	XL	C1	C	B	70dB	A	5060408161685





# DX640®



	SECTION	PROFILE	RIM	LI/SR	EXTRA LOAD	CLASS	ROLLING RESISTANCE	WET GRIP	NOISE dB	NOISE BAR	EAN
19"	225	35	19	88Y	XL	C1	C	B	68dB	A	5060408161319
	225	40	19	93Y	XL	C1	B	B	68dB	A	5060408161326
	225	45	19	96W	XL	C1	B	A	68dB	A	5060408161487
	225	55	19	99V	-	C1	B	B	68dB	A	5060408162644
	225	55	19	99Y	-	C1	B	B	68dB	A	5060408162637
	235	35	19	91W	XL	C1	B	B	68dB	A	5060408160435
	235	35	19	91Y	XL	C1	B	B	68dB	A	5060408162460
	235	40	19	96W	XL	C1	B	B	68dB	A	5060408160466
	235	40	19	96Y	XL	C1	B	B	68dB	A	5060408162477
	235	45	19	99W	XL	C1	B	B	68dB	A	5060408160480
	235	50	19	99V	XL	C1	B	B	68dB	A	5060408161494
	235	55	19	101V	-	C1	B	B	68dB	A	5060408162613
	235	55	19	105V	XL	C1	B	B	68dB	A	5060408160506
	245	35	19	93Y	XL	C1	C	B	68dB	A	5060408161388
	245	40	19	98Y	XL	C1	B	B	68dB	A	5060408160527
	245	45	19	102Y	XL	C1	B	B	68dB	A	5060408162651
	255	30	19	91Y	XL	C1	C	B	70dB	A	5060408161623
	255	35	19	96Y	XL	C1	C	B	70dB	A	5060408160572
	255	40	19	100Y	XL	C1	B	B	70dB	A	5060408162620
	255	50	19	103Y	-	C1	B	B	70dB	B	5060408162552
	255	50	19	107W	XL	C1	B	B	70dB	A	5060408160589
	255	55	19	111V	XL	C1	B	B	70dB	A	5060408160602
	255	55	19	111Y	XL	C1	B	B	70dB	A	5060408162569
	265	30	19	93Y	XL	C1	C	B	70dB	A	5060408161630
	265	35	19	98Y	XL	C1	C	B	70dB	A	5060408161647
	275	30	19	96Y	XL	C1	C	B	70dB	A	5060408161678
	275	35	19	100W	XL	C1	C	B	70dB	A	5060408161500
	275	35	19	100Y	XL	C1	C	B	70dB	A	5060408162576
	275	40	19	101Y	-	C1	C	B	70dB	B	5060408161692
	275	45	19	108Y	XL	C1	B	B	70dB	A	5060408160640
	285	45	19	111W	XL	C1	B	B	71dB	A	5060408160671
20"	245	35	20	95W	XL	C1	B	B	68dB	A	5060408162712
	245	40	20	99Y	XL	C1	B	B	68dB	A	5060408161449
	245	45	20	103Y	XL	C1	B	B	68dB	A	5060408160541
	255	35	20	97Y	XL	C1	B	B	70dB	A	5060408160961
	255	40	20	101Y	XL	C1	B	B	70dB	A	5060408165102
	255	45	20	101W	-	C1	C	B	70dB	B	5060408162545
	255	45	20	105V	XL	C1	B	B	70dB	A	5060408161470
	255	50	20	109Y	XL	C1	B	B	70dB	A	5060408160596
	265	40	20	104Y	XL	C1	B	B	70dB	A	5060408161654
	265	45	20	104Y	-	C1	B	B	70dB	B	5060408161432
	265	50	20	111W	XL	C1	B	B	70dB	A	5060408161661
	275	30	20	97W	XL	C1	C	B	70dB	A	5060408164808
	275	30	20	97Y	XL	C1	C	B	70dB	A	5060408165096
	275	40	20	106Y	XL	C1	B	B	70dB	A	5060408160633
	275	45	20	110Y	XL	C1	B	B	70dB	A	5060408160657
	275	60	20	115H	-	C1	B	B	70dB	B	5060408164815
	285	45	20	112Y	XL	C1	B	B	71dB	A	5060408162699
	285	50	20	112V	-	C1	B	B	71dB	A	5060408164822
	315	35	20	110W	XL	C1	B	B	71dB	A	5060408160688
	315	35	20	110Y	XL	C1	B	B	71dB	A	5060408162583
21"	255	40	21	102Y	XL	C1	B	B	70dB	A	5060408164891
	265	40	21	105Y	XL	C1	B	B	70dB	A	5060408162729
	275	40	21	107Y	XL	C1	B	B	70dB	A	5060408165119
	275	45	21	110Y	XL	C1	B	B	70dB	A	5060408160985
	275	50	21	113V	XL	C1	B	B	70dB	A	5060408164839
	285	40	21	109Y	-	C1	B	B	71dB	A	5060408164877
	295	35	21	107Y	XL	C1	B	B	71dB	A	5060408160978
	295	40	21	111Y	XL	C1	B	B	71dB	A	5060408165232
	315	40	21	111Y	-	C1	B	B	71dB	A	5060408164846



<b>SIZE RANGE</b>	<b>16" - 22"</b>	<b>FUEL</b>	<b>B-D</b>
<b>SPEED RATINGS</b>	<b>H / V / W / Y</b>	<b>WET GRIP</b>	<b>A-B</b>
<b>NO. OF SIZES</b>	<b>126</b>	<b>NOISE</b>	<b>68-71dB</b>
<b>PATTERN TYPE</b>	<b>ASYMMETRIC</b>	<b>UTQG</b>	<b>TREAD WEAR 420, TRACTION A, TEMPERATURE AA</b>

	SECTION	PROFILE	RIM	LI/SR	EXTRA LOAD	CLASS	ROLLING RESISTANCE	WET GRIP	NOISE dB	NOISE BAR	EAN
<b>22"</b>	265	35	22	102W	XL	C1	B	B	70dB	A	5060408164884
	275	40	22	108Y	XL	C1	B	B	70dB	A	5060408160992
	285	35	22	106W	XL	C1	B	B	71dB	A	5060408160664
	295	30	22	103Y	XL	C1	C	B	71dB	A	5060408161708

Regulation (EU) 2020/740





# PROTOURA<sup>®</sup>SPORT



## INNOVATIONS IN TREAD DESIGN AND AN ADVANCED SILICA COMPOUND, MEAN THAT PROTOURA SPORT DELIVERS CONTROL, GRIP AND COMFORT

**Protoura Sport combines the latest advances in tread design and specially engineered silica compound technology.**

- Solid outer block pattern for precise steering response
- Wide longitudinal grooves for efficient water evacuation
- Deep rim protector for enhanced wheel protection
- Solid circumferential centre groove for straight line traction



Ultra-black laser-engraved sidewall texture



**SPORTY  
DRIVE**



**PRECISION  
CORNERING**



**ENHANCED  
WATER  
DISPERSION**

### Italiano

Protoura Sport  
LE INNOVAZIONI NELLA PROGETTAZIONE  
DEI BATTISTRADA E UN'INNOVATIVA  
MESCOLA DI SILICE CONSENTONO  
AGLI PNEUMATICI PROTOURA SPORT  
DI FORNIRE CONTROLLO, ADERENZA E  
COMFORT.

Protoura Sport combina i più recenti  
progressi nel design del battistrada e  
nella tecnologia della mescola di silice  
appositamente concepita.

- Solido disegno esterno a blocchi per una risposta precisa dello sterzo
- Ampie scanalature longitudinali per un'efficiente evacuazione dell'acqua
- Spessa protezione in gomma per una migliore protezione dei cerchi
- Solida scanalatura centrale circonferenziale per una perfetta tenuta

### Deutsch

Protoura Sport  
INNOVATIVES LAUFFLÄCHENDESIGN  
GEPAART MIT EINER HOCH ENTWICKELTEN  
SILIKAMISCHUNG SIND DIE MERKMALE  
DES REIFENMODELLS „PROTOURA SPORT“  
FÜR KONTROLLE, BODENHAFTUNG UND  
KOMFORT.

Das Reifenmodell „Protoura Sport“  
kombiniert die neuesten Fortschritte  
im Laufflächendesign mit einer speziell  
entwickelten Silikamischungstechnologie.

- Solides äußeres Blockmuster für ein präzises Lenkverhalten
- Breite Längsrillen für effiziente Wasserableitung
- Tiefer Felgenschutz für verbesserten Radschutz
- Massive, umlaufende Mittelrinne für geradlinige Traktion

### Español

Protoura Sport  
DISEÑO DE BANDA INNOVADOR Y UN  
COMPUESTO DE SÍLICE AVANZADO  
HACEN QUE PROTOURA SPORT OFREZCA  
CONTROL, AGARRE Y COMODIDAD.

Protoura Sport combina los últimos  
avances en materia de diseño de banda con  
tecnología de compuestos de sílice diseñada  
especialmente.

- Un sólido patrón de bloque externo logra una respuesta precisa de la dirección
- Entalladuras longitudinales amplias para drenar el agua de manera eficaz
- Protector de llanta profundo para proteger mejor la rueda
- Sólida entalladura central que recorre la circunferencia para una tracción en línea recta



**SIZE RANGE** 17" - 22"  
**SPEED RATINGS** W / Y  
**NO. OF SIZES** 61  
**PATTERN TYPE** ASYMMETRIC

**FUEL** C-D  
**WET GRIP** A-B  
**NOISE** 70-72dB  
**UTQG** TREAD WEAR 400, TRACTION A, TEMPERATURE A

	SECTION	PROFILE	RIM	LI/SR	EXTRA LOAD	CLASS	ROLLING RESISTANCE	WET GRIP	NOISE dB	NOISE BAR	EAN
17"	205	40	17	84Y	XL	C1	C	B	70dB	B	5060408164679
	205	45	17	88W	XL	C1	TBC	TBC	TBC	TBC	TBC
	205	50	17	93W	XL	C1	TBC	TBC	TBC	TBC	TBC
	205	55	17	95W	XL	C1	TBC	TBC	TBC	TBC	TBC
	215	40	17	87W	XL	C1	C	B	70dB	B	5060408164693
	215	45	17	91Y	XL	C1	C	B	70dB	B	5060408165171
	215	50	17	95W	XL	C1	C	B	70dB	B	5060408164648
	215	55	17	98W	XL	C1	C	B	70dB	B	5060408164655
	225	45	17	94Y	XL	C1	D	B	70dB	B	5060408162859
	225	50	17	98Y	XL	C1	C	B	70dB	B	5060408164662
	225	55	17	101Y	XL	C1	C	B	70dB	B	5060408164686
	235	45	17	97Y	XL	C1	D	B	70dB	B	5060408162965
18"	245	40	17	95Y	XL	C1	C	A	70dB	B	5060408163023
	205	40	18	86W	XL	C1	C	B	70dB	B	5060408164341
	215	40	18	89Y	XL	C1	D	B	70dB	B	5060408162804
	225	40	18	92Y	XL	C1	D	B	70dB	B	5060408162835
	225	45	18	95Y	XL	C1	D	B	70dB	B	5060408162880
	225	50	18	99W	XL	C1	C	B	70dB	B	5060408164563
	235	40	18	95Y	XL	C1	D	B	70dB	B	5060408162910
	235	45	18	98Y	XL	C1	D	B	70dB	B	5060408162989
	235	50	18	101W	XL	C1	C	B	70dB	B	5060408164709
	245	35	18	92Y	XL	C1	C	A	70dB	B	5060408162996
	245	40	18	97Y	XL	C1	C	A	70dB	B	5060408163047
	245	45	18	100Y	XL	C1	C	A	70dB	B	5060408163078
	245	50	18	100Y	-	C1	C	B	70dB	B	5060408164587
	255	35	18	94Y	XL	C1	C	A	70dB	B	5060408163092
	265	35	18	97Y	XL	C1	C	B	70dB	B	5060408163139
19"	265	40	18	101Y	XL	C1	C	B	71dB	B	5060408163238
	275	40	18	103Y	XL	C1	C	B	71dB	B	5060408163184
	225	35	19	88Y	XL	C1	D	B	70dB	B	5060408162811
	225	40	19	93Y	XL	C1	C	B	70dB	B	5060408164747
	225	45	19	96W	XL	C1	C	B	70dB	B	5060408164716
	235	35	19	91Y	XL	C1	D	B	70dB	B	5060408162934
	235	45	19	99Y	XL	C1	TBC	TBC	TBC	TBC	TBC
	245	35	19	93Y	XL	C1	C	A	70dB	B	5060408163009
	245	45	19	102Y	XL	C1	C	B	70dB	B	5060408164723
	255	30	19	91Y	XL	C1	C	A	70dB	B	5060408163108
	255	35	19	96Y	XL	C1	C	A	70dB	B	5060408164518
	255	45	19	100Y	XL	C1	C	A	70dB	B	5060408164198
	265	35	19	98Y	XL	C1	C	B	70dB	B	5060408163146
	285	30	19	98Y	XL	C1	C	B	71dB	A	5060408163214
20"	225	35	20	90Y	XL	C1	C	B	70dB	B	5060408165294
	235	50	20	104W	XL	C1	C	B	70dB	B	5060408164730
	235	55	20	105V	XL	C1	TBC	TBC	TBC	TBC	TBC
	245	30	20	90Y	XL	C1	C	B	70dB	B	5060408164570
	245	40	20	99Y	XL	C1	C	A	70dB	B	5060408163054
	245	45	20	103Y	XL	C1	TBC	TBC	TBC	TBC	TBC
	245	50	20	105V	XL	C1	TBC	TBC	TBC	TBC	TBC
	255	30	20	92Y	XL	C1	C	B	70dB	A	5060408164594
	255	35	20	97Y	XL	C1	C	A	70dB	B	5060408163115
	265	35	20	99Y	XL	C1	C	B	70dB	B	5060408163153
	275	35	20	102Y	XL	C1	C	B	71dB	B	5060408163177
	285	30	20	99Y	XL	C1	TBC	TBC	TBC	TBC	TBC
21"	245	40	21	100Y	XL	C1	C	A	70dB	B	5060408164501
	265	45	21	108W	XL	C1	TBC	TBC	TBC	TBC	TBC
	275	35	21	103Y	XL	C1	C	B	71dB	B	5060408165287
22"	285	35	21	105Y	XL	C1	C	B	71dB	A	5060408163207
	275	35	22	104Y	XL	C1	C	B	71dB	B	5060408165454
	285	40	22	110Y	XL	C1	C	B	71dB	A	5060408164600
	295	40	22	112Y	XL	C1	C	B	72dB	A	5060408164624
	315	30	22	107Y	XL	C1	C	B	73dB	B	5060408165461





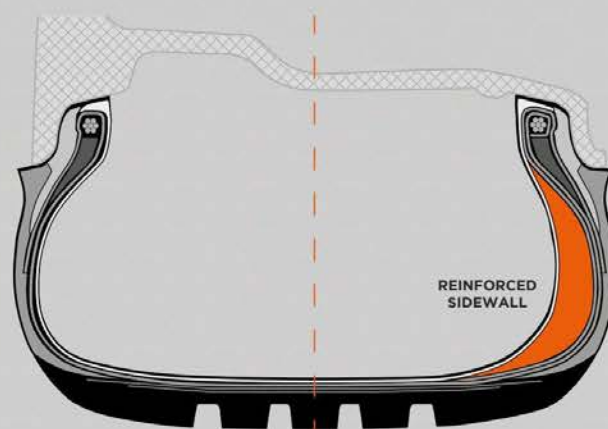
# DSP® RUNFLAT



## DAVANTI RUNFLAT TECHNOLOGY - FOR EXTENDED MOBILITY AND CONTROL

The Davanti run flat range offers premium performance without any compromise of our trademark longevity, handling and reliability. The range is extensively tested to ensure ISO 16992 for run flat performance is comfortably exceeded.

- Reinforced internal sidewall incorporating Davanti's innovative DSP technology
- Lateral and transverse load support whilst operating at zero pressure
- Allows for continued safe operation at speeds of up to 80 km/h whilst deflated or deflating
- Integrated rim protection to prevent wheel damage



CONVENTIONAL SIDEWALL

DSP RUNFLAT



LOW NOISE



EXCEPTIONAL WET WEATHER GRIP



SPORTY DRIVE

### Italiano

#### DSP RUNFLAT

Superando comodamente le linee guida ISO 16992 per prestazioni run flat, la gamma run flat Davanti offre prestazioni eccellenti senza compromettere la longevità, la maneggevolezza e l'affidabilità che contraddistinguono Davanti.

- Rivestimento interno rinforzato che integra l'innovativa tecnologia DSP Davanti.
- Supporto del carico laterale e trasversale durante il funzionamento a pressione(i) zero.
- Consente di continuare a operare in sicurezza a velocità fino a 80 km/h quando è sgonfio o si sta sgonfiando.
- Protezione integrata del cerchio per evitare danni alla ruota.

### Deutsch

#### DSP RUNFLAT

Sämtliche Davanti Runflat-Produkte, welche die ISO 16992-Richtlinien für Reifen mit Notlaufeigenschaften deutlich übertreffen, bieten erstklassige Funktionalität ohne Kompromisse hinsichtlich Langlebigkeit, Handling oder Zuverlässigkeit.

- Verstärkte innere Seitenwand mit Davanti's innovativer DSP Technologie.
- Längs- und Querunterstützung bei Betrieb ohne Reifenfülldruck.
- Erlaubt weiterhin eine sichere Fahrt mit Geschwindigkeiten von bis zu 80 km/h - auch nach vollständigem Luftverlust.
- Integrierte Felgenschutzleiste gegen Beschädigungen.

### Español

#### DSP RUNFLAT

La gama de run flats de Davanti proporciona un rendimiento premium sin sacrificar la durabilidad, maniobrabilidad y fiabilidad características de la marca.

- La pared interior reforzada incorpora la innovadora tecnología DSP de Davanti
- Proporciona un soporte de carga lateral y transversal mientras opera a presión cero
- Permite una conducción continua y segura, hasta una velocidad de 80 km/h, incluso cuando el neumático está desinflado o cuando se está desinflando
- Protección de llanta integrada para prevenir daños en la rueda.



**SIZE RANGE** 16" - 21"  
**SPEED RATINGS** V / W / Y  
**NO. OF SIZES** 11  
**PATTERN TYPES** ASYMMETRIC

**FUEL** D  
**WET GRIP** A-B  
**NOISE** 68-70dB


**DX390<sup>®</sup> RUNFLAT**

**DX640<sup>®</sup> RUNFLAT**

**PROTOURA<sup>®</sup> SPORT<sup>✓</sup>  
RUNFLAT**

	SECTION	PROFILE	RIM	LI/SR	PATTERN	EXTRA LOAD	ROLLING RESISTANCE	WET GRIP	NOISE dB	NOISE BAR	EAN
<b>16"</b>	195	55	16	87V	DX390	-	D	A	68db	A	6950306312304
	205	55	16	91V	DX390	-	D	A	68dB	A	6950306312342
<b>17"</b>	205	45	17	84V	DX640	-	D	A	70db	B	6950306312137
	205	50	17	89W	DX640	-	D	A	70dB	B	6950306311994
	225	45	17	91W	DX640	-	D	A	70dB	B	6950306312090
	225	45	17	91W	PROTOURA	-	D	B	70dB	B	5060408164068
	225	50	17	94W	DX640	-	D	A	70dB	B	6950306312076
<b>18"</b>	225	45	18	91W	PROTOURA	-	D	B	70dB	B	5060408164075
	245	40	18	93Y	PROTOURA	-	D	B	70dB	B	5060408164082
	245	45	18	96Y	PROTOURA	-	D	B	70dB	B	5060408164099
<b>21"</b>	245	40	21	100Y	PROTOURA	XL	D	B	70dB	B	5060408164525

Regulation (EU) 2020/740





# DX740<sup>®</sup> H/T



## OPTIMISED ASYMMETRIC SUV TYRE FOR A FUEL EFFICIENT, SMOOTH AND COMFORTABLE DRIVE

**For a comfortable and quiet drive on SUV applications, the DX740 offers the optimum balance of wet and dry grip, with a smooth, comfortable and quiet drive.**

- Four longitudinal deep grooves run the circumference of the tyre to provide drainage from the road contact areas of the tread pattern.
- The inner block section works in conjunction with the outer-inside block section to dissipate water out of the central grooves and away from the contact zone.
- The outer block section contains U-shaped grooves which work to both contain noise dissipation.



### Italiano

**DX740**  
Pneumatico ottimizzato per SUV, per una guida comoda, scorrevole e a basso consumo di carburante.

Per una guida comoda e silenziosa su un SUV, lo pneumatico DX740 offre l'equilibrio perfetto tra aderenza sull'asciutto e sul bagnato, garantendo comodità, scorrevolezza e bassa rumorosità:

- Sulla circonferenza dello pneumatico, sono presenti quattro scanalature longitudinali e profonde in grado di garantire il drenaggio dalle aree del battistrada a contatto con la strada.
- La sezione interna dei blocchi lavora insieme alla sezione esterna internamente ai blocchi per eliminare l'acqua dalle scanalature centrali e dalla zona di contatto.
- La sezione esterna dei blocchi contiene scanalature a forma di U che consentono di contenere la dissipazione del rumore e offrire aderenza in presenza di fango.

### Deutsch

**DX740**  
Ein optimierter SUV-Reifen für niedrigen Kraftstoffverbrauch und ruhige bei ruhigen und ausgewogenen Fahreigenschaften.

Der DX740 sorgt für eine angenehme und geräuscharme Fahrt bei SUV-Fahrzeugen, bietet ein optimales Gleichgewicht zwischen Nass- und Trockenhaftung und ermöglicht so eine ruhige, komfortable und leise Fahrt:

- Vier tiefe Längsrillen entlang des Reifenumfangs ermöglichen den sicheren Abfluss des Wassers von der Aufstandsfläche des Reifenprofils auf der Straße.
- Das Zusammenspiel der inneren und äußeren Profilblöcke leitet das Wasser effizient vom Zentrum der Kontaktfläche ab.
- Der äußere Profilblock verfügt über U-förmige Rillen, die sowohl den Geräuschpegel dämpfen, als auch eine sichere Haftung auf schlammigem Untergrund bieten.

### Español

**DX740**  
Neumático optimizado para SUV para una conducción económica, suave y confortable.

El neumático DX740 ofrece el equilibrio óptimo de adherencia en seco y mojado para proporcionar una conducción silenciosa y confortable para aplicaciones de SUV:

- Cuatro profundas ranuras longitudinales recorren la circunferencia del neumático para desalojar el agua de las zonas de contacto de la banda de rodadura con la carretera.
- La zona interior de la banda de rodadura actúa junto con la zona interior-exterior para disipar el agua de las ranuras centrales y desalojarla de la zona de contacto.
- La zona exterior de la banda de rodadura incorpora ranuras en forma de U que actúan para amortiguar el ruido y proporcionar agarre en terreno embarrado.



<b>SIZE RANGE</b>	<b>16" - 20"</b>	<b>FUEL</b>	<b>B-C</b>
<b>SPEED RATINGS</b>	<b>H / V / W</b>	<b>WET GRIP</b>	<b>B-C</b>
<b>NO. OF SIZES</b>	<b>14</b>	<b>NOISE</b>	<b>68-70dB</b>
<b>PATTERN TYPE</b>	<b>ASYMMETRIC</b>	<b>UTQG</b>	<b>TREAD WEAR 500, TRACTION A, TEMPERATURE AA</b>

	SECTION	PROFILE	RIM	LI/SR	EXTRA LOAD	CLASS	ROLLING RESISTANCE	WET GRIP	NOISE dB	NOISE GRADE	EAN
<b>16"</b>	215	70	16	100H	-	C1	B	C	68dB	A	5060408161258
	225	70	16	103H	-	C1	B	B	69dB	B	5060408161104
<b>17"</b>	215	65	17	99V	-	C1	C	B	68dB	A	5060408165249
	225	60	17	99H	-	C1	B	B	69dB	B	5060408161357
	225	65	17	106V	XL	C1	B	B	69dB	A	5060408162248
	235	65	17	108V	XL	C1	B	B	69dB	A	5060408161135
	245	65	17	111H	XL	C1	B	B	69dB	A	5060408162279
	255	60	17	110V	XL	C1	B	B	70dB	A	5060408161418
	255	65	17	110H	-	C1	B	B	70dB	B	5060408161128
<b>18"</b>	225	55	18	102W	XL	C1	B	B	69dB	A	5060408161333
	225	60	18	100V	-	C1	B	B	69dB	B	5060408161081
	235	60	18	107V	XL	C1	B	B	69dB	A	5060408161098
	255	60	18	112V	XL	C1	B	B	70dB	A	5060408161425
<b>20"</b>	265	55	20	113V	XL	C1	TBC	TBC	TBC	TBC	TBC

Regulation (EU) 2020/740





# DX420®



## HEAVY-DUTY COMMERCIAL TAXI TYRE WITH EXCEPTIONAL GRIP AND OUTSTANDING PERFORMANCE

**Commercial taxi tyre designed for Hackney Carriage applications. Built to be tough and long lasting, the DX420 delivers exceptional all-weather grip and a comfortable drive.**

- High wear-resistant outer tread section, designed to contain noise and maximise the life of the tyre
- Diagonal block pattern optimises drainage to provide wet-weather traction
- Compound developed specifically for taxi applications, designed to provide exceptional mileage
- High-tensile strength steel-belted tyre construction reduces the risk of a puncture and maximises the life of the tyre



**DURABLE  
AND RIGID  
CONSTRUCTION**



**EXCEPTIONAL WET  
WEATHER GRIP**



**HIGH MILEAGE  
CAPABILITY**

### Italiano

**DX420**  
Pneumatico commerciale per taxi ad alta resistenza caratterizzato da aderenza e prestazioni eccellenti.

Lo pneumatico commerciale per taxi è stato studiato per l'impiego sui tipici taxi neri londinesi. Costruito per essere resistente e durare nel tempo, lo pneumatico DX420 offre un'aderenza eccezionale in tutte le condizioni climatiche e una guida all'insegna della comodità:

- Sezione esterna del battistrada altamente resistente, studiata per ridurre il rumore e ottimizzare la durata dello pneumatico.
- Tassellatura diagonale dei blocchi per ottimizzare il drenaggio e migliorare la trazione sul bagnato.
- Mescola sviluppata specificatamente per i taxi, per offrire un chilometraggio eccezionale.
- Struttura cinturata in acciaio per un'ottima resistenza in grado di ridurre il rischio di forature e ottimizzare la durata dello pneumatico.

### Deutsch

**DX420**  
Hochbelastbare Reifen für Taxis mit außergewöhnlichen Haftungseigenschaften und herausragenden Leistungswerten.

Reifen für Taxis, speziell entwickelt für die typisch englischen Hackney-Carriage-Taxis. DX420-Reifen sind robust und langlebig und gewährleisten dadurch bei jedem Wetter eine ausgezeichnete Bodenhaftung und komfortable Fahreigenschaften:

- Ein extrem verschleißresistenter äußerer Laufflächenabschnitt, der Fahrgeräusche dämpft und die Lebensdauer des Reifens erhöht.
- Das diagonale Blockmuster optimiert die Wasserverdrängung und ermöglicht somit eine verbesserte Bodenhaftung auf nasser Fahrbahn.
- Die Mischung wurde speziell für Taxireifen entwickelt, sodass eine außergewöhnlich hohe Laufleistung garantiert ist.
- Ein hoch-belastbarer Stahlgürtelaufbau verringert das Risiko einer Reifenpanne und erhöht die Lebensdauer des Reifens.

### Español

**DX420**  
Neumáticos para taxis de alta resistencia con un agarre excepcional y un rendimiento sobresaliente.

El neumático para taxis está diseñado en todas las condiciones y una conducción confortable:

- La sección externa de la banda de rodadura tiene una gran resistencia al desgaste y se ha diseñado para reducir el ruido y maximizar la vida útil de neumático.
- El patrón de bloques diagonales optimiza la expulsión de agua y proporciona una gran tracción en condiciones de lluvia.
- Cuenta con un compuesto especialmente diseñado para taxis, que proporciona un kilometraje y una vida útil excepcionales.
- La estructura de acero interna del neumático ofrece una gran resistencia a la torsión, reduce el riesgo de pinchazos y maximiza la vida útil del neumático.



**SIZE RANGE** 16"  
**SPEED RATINGS** Q  
**NO. OF SIZES** 1  
**PATTERN TYPE** SYMMETRIC

**FUEL** C  
**WET GRIP** C  
**NOISE** 72dB

	SECTION	PROFILE	RIM	LI/SR	PLY RATING	CLASS	ROLLING RESISTANCE	WET GRIP	NOISE dB	NOISE GRADE	EAN
16"	175	80	16	98/96Q	-	C1	C	C	72dB	B	5060408160763

Regulation (EU) 2020/740





# DX440®



## COMMERCIAL VAN TYRE BUILT TO ENDURE HEAVY LOADS IN CHALLENGING CONDITIONS

**Versatile commercial van tyre designed to perform on both normal road terrains and in demanding site conditions. The high wear resistant, symmetrical, DX440 endures heavy loads without compromising handling or comfort.**

- Heavy-duty shoulder construction delivers a responsive drive under heavy loads and on demanding surfaces
- Offset outer block section actively contains noise and provides superior drainage for exceptional grip in wet and dry conditions
- With three deep longitudinal grooves, the DX440 offers excellent water dissipation and traction in highway conditions
- The inner block section is designed to provide traction in dry conditions, both on the road and in demanding off-road conditions



### Italiano

#### DX440

Pneumatico commerciale per furgoni di estrema resistenza e durata per carichi pesanti in tutte le condizioni.

Versatile pneumatico commerciale per furgoni, studiato per strade normali o in condizioni più impegnative. Lo pneumatico DX440 ad elevata resistenza sopporta anche i carichi di lavoro più pesanti senza alcun compromesso in termini di manovrabilità e comfort.

- L'elevata resistenza della struttura delle spalle offre una guida reattiva anche in presenza di carichi pesanti e su superfici impegnative.
- La sezione esterna deviata dei blocchi riduce attivamente il rumore e fornisce una maggiore capacità di drenaggio per un'aderenza eccezionale sia sul bagnato che in condizioni asciutte.
- Con 3 profonde scanalature longitudinali, lo pneumatico DX440 offre un eccellente drenaggio dell'acqua e una trazione ottimale su strada.
- La sezione interna dei blocchi è studiata per offrire una trazione ottimale in condizioni asciutte sia su strada che su impegnative superfici sterrate.

### Deutsch

#### DX440

Hochbelastbarer und langlebiger Transporter-Reifen für eine sichere Beförderung von Gütern und Personen unter allen Bedingungen.

Ein vielseitiger Reifen für Transporter, der sowohl für normale Straßen als auch für den Einsatz auf unterschiedlichem Gelände geeignet ist. Der verschleißresistente DX440-Reifen ist für kommerzielle Transporter geeignet – ohne Kompromisse beim Fahrverhalten oder Komfort.

- Der hochbelastbare Schulteraufbau ermöglicht ein optimales Ansprechverhalten auch bei Schwerlast und extremen Bodenbeschaffenheiten.
- Der versetzte äußere Teil des Profilblocks dämmt aktiv die Fahrgeräusche und ermöglicht eine überdurchschnittliche Wasserverdrängung, die eine ausgezeichnete Haftung sowohl bei trockener als auch bei nasser Fahrbahn garantiert.
- Mit seinen 3 tiefen Längsrillen bietet der DX440-Reifen auch bei Autobahnfahrten eine ausgezeichnete Wasserverdrängung und Bodenhaftung.
- Der Profilbereich in der Laufflächenmitte ist so konzipiert, dass der Reifen bei trockenen Witterungsbedingungen sowohl auf der Straße als auch beim Einsatz im Gelände eine ausgezeichnete Traktion bietet.

### Español

#### DX440

Neumático para furgonetas industriales con la resistencia y la durabilidad necesarias para resistir cargas pesadas en todas las condiciones.

Neumático versátil diseñado para realizar tanto rutas por terreno normal como travesías por terrenos complicados. La alta resistencia al desgaste del DX440 permite llevar pesadas cargas sin comprometer la maniobrabilidad y el confort.

- Construcción del flanco de alta resistencia que proporciona una magnífica respuesta con cargas pesadas y sobre superficies exigentes.
- Sección de bloques exterior dividida que reduce la rumorosidad y proporciona una expulsión de agua superior para conseguir un agarre excepcional tanto en seco como en mojado.
- Con tres profundas entalladuras longitudinales, el DX440 ofrece una excelente disipación del agua y una tracción sobresaliente en autopista.
- La sección de bloques interior está diseñada para proporcionar tracción en seco, tanto en carretera como en exigentes travesías todoterreno.



**SIZE RANGE** 13" - 17"  
**SPEED RATINGS** N / Q / R / S / T  
**NO. OF SIZES** 33  
**PATTERN TYPE** SYMMETRIC

**FUEL** C  
**WET GRIP** C  
**NOISE** 72dB

	SECTION	PROFILE	RIM	LI/SR	PLY RATING	CLASS	ROLLING RESISTANCE	WET GRIP	NOISE dB	NOISE GRADE	EAN
13"	155	80	13	85/83R	6PR	C2	C	C	72dB	B	5060408160718
	165	80	13	96/94N	-	C2	C	C	72dB	B	5060408161609
	165	80	13	94/92Q	8PR	C2	C	C	72dB	B	5060408160732
	175	80	13	97/95Q	8PR	C2	C	C	72dB	B	5060408160756
14"	165	70	14	89/87R	6PR	C2	C	C	72dB	B	5060408160725
	175	65	14	90/88T	6PR	C2	C	C	72dB	B	5060408160749
	175	70	14	95/93S	6PR	C2	C	C	72dB	B	5060408162675
	175	70	14	95/93T	6PR	C2	C	C	72dB	B	5060408162682
	185	80	14	102/100R	8PR	C2	C	C	72dB	B	5060408160787
	195	80	14	106/104R	8PR	C2	C	C	72dB	B	5060408164914
15"	195	70	15	104/102R	8PR	C2	C	C	72dB	B	5060408160800
	195	80	15	106/104R	8PR	C2	C	C	72dB	B	5060408162286
	205	70	15	106/104S	8PR	C2	C	C	72dB	B	5060408160831
	215	65	15	104/102T	6PR	C2	C	C	72dB	B	5060408160862
	215	70	15	109/107R	8PR	C2	C	C	72dB	B	5060408160886
	215	70	15	109/107S	8PR	C2	C	C	72dB	B	5060408164389
	225	70	15	112/110S	8PR	C2	C	C	72dB	B	5060408160916
16"	185	75	16	104/102R	8PR	C2	C	C	72dB	B	5060408160770
	195	65	16	104/102R	8PR	C2	C	C	72dB	B	5060408160794
	195	65	16	104/102T	8PR	C2	C	C	72dB	B	5060408161715
	195	75	16	107/105R	8PR	C2	C	C	72dB	B	5060408160817
	205	65	16	107/105R	8PR	C2	C	C	72dB	B	5060408160824
	205	65	16	107/105T	8PR	C2	C	C	72dB	B	5060408164372
	205	75	16	110/108R	8PR	C2	C	C	72dB	B	5060408160848
	205	75	16	113/111R	10PR	C2	C	C	72dB	B	5060408164631
	215	60	16	108/106T	8PR	C2	C	C	72dB	B	5060408160855
	215	65	16	109/107R	8PR	C2	C	C	72dB	B	5060408160879
	215	70	16	108/106T	8PR	C2	C	C	72dB	B	5060408164785
	215	75	16	116/114R	10PR	C2	C	C	72dB	B	5060408160893
	225	65	16	112/110T	8PR	C2	C	C	72dB	B	5060408160909
	225	75	16	121/120R	10PR	C2	C	C	72dB	B	5060408160923
	235	65	16	115/113T	8PR	C2	C	C	72dB	B	5060408160930
17"	215	60	17	109/107T	8PR	C2	C	C	72dB	B	5060408162668

Regulation (EU) 2020/740





# TERRATOURA® A/T



## ALL-TERRAIN TYRE PROVIDING THE PERFECT BALANCE OF HIGHWAY AND OFF-ROAD PERFORMANCE

**When nowhere is off-limits, you need a tyre with real bite that doesn't compromise on ride comfort and reliability.**

- Boasting a wealth of cutting-edge enhancements, the Terratoura's carcass construction provides higher load capability, improved safety and protection and harmonic load distribution for even treadwear
- Two longitudinal grooves running the circumference of the tyre provide effective water evacuation and exceptional wet performance
- Wide shoulder grooves allow for efficient dispersion of mud, sand and dust, increasing traction in off-road conditions
- Specially constructed tread support bars offer increased on-road performance and low noise
- Three-Peak Mountain Snowflake certification means that Terratoura performs exceptionally well in wintry conditions



**DURABLE  
AND RIGID  
CONSTRUCTION**



**ALL WEATHER  
TRACTION**



**HIGH LOAD  
ENDURANCE**

### Italiano

**TERRATOURA**  
Pneumatico all-terrain che garantisce il perfetto equilibrio tra prestazioni su STRADA e fuoristrada.

Quando nessun posto è off-limits, ti serve un pneumatico che non comprometta il comfort e l'affidabilità di guida.

- La struttura della carcassa di Terratoura, che vanta una serie di migliorie all'avanguardia, offre una maggiore capacità di carico, una maggiore sicurezza e protezione e una distribuzione armonica del carico per un'usura uniforme del battistrada.
- Due scanalature longitudinali lungo la circonferenza del pneumatico garantiscono un'efficace fuoriuscita dell'acqua e prestazioni sul bagnato eccezionali.
- Le ampie scanalature delle spalle consentono un'efficace dispersione del fango, della sabbia e della polvere, aumentando la trazione nel fuoristrada.
- Le barre di supporto del battistrada appositamente realizzate offrono migliori prestazioni su strada e bassa rumorosità.
- La certificazione Three-peak Mountain Snowflake fa sì che Terratoura si dimostri eccezionalmente efficiente in condizioni climatiche invernali.

### Deutsch

**TERRATOURA**  
Wenn Ihnen „irgendwohin“ nicht weit genug weg ist, brauchen Sie einen Reifen mit echtem Biss, der Fahrkomfort und Zuverlässigkeit nicht vernachlässigt.

- Die spezielle Karkass-Konstruktion des Terratoura verfügt über eine Vielzahl von innovativen Verbesserungen und gewährleistet eine höhere Belastbarkeit, verbesserte Sicherheit und Schutz sowie eine harmonische Lastverteilung für einen gleichmäßigen Profilverschleiß
- Zwei umlaufende Längsprofilrillen sorgen für eine effektive Wasserabführung und hervorragenden Nassgrip
- Breite Rillen zwischen den robusten Schulterblöcken ermöglichen eine effiziente Verdrängung von Schlamm, Sand und Staub und erhöhen die Traktion im Gelände
- Speziell konstruierte Profilstege verbessern die Leistung auf der Straße und verringern das Abrollgeräusch
- Die 3PMSF-Zertifizierung bedeutet, dass der Terratoura bei winterlichen Bedingungen hervorragend funktioniert

### Español

**TERRATOURA**  
Cuando ningún lugar está fuera de tus límites, necesitas un neumático con agarre excepcional que no sacrifica ni la comodidad ni la fiabilidad.

- Presenta varias mejoras de vanguardia. La construcción del cuerpo de Terratoura proporciona una mayor capacidad de carga, protección y seguridad mejoradas, y una distribución de carga armónica que resulta en un desgaste de neumático equilibrado
- Dos surcos longitudinales en la circunferencia del neumático brindan una evacuación eficiente del agua y un rendimiento excelente en suelo mojado
- Surcos anchos en el hombro permiten una mayor dispersión de barro, arena y polvo, incrementando la tracción en condiciones dadas fuera de carretera
- Barras expresamente construidas para dar soporte a la banda de rodadura proporcionan un rendimiento mayor en carretera y niveles de ruido bajos.
- El certificado 3PMSF (Three Peak Mountain Snowflake) garantiza que Terratoura rinde de forma excepcional en condiciones de invierno.



**SIZE RANGE** 14" - 22"  
**SPEED RATINGS** R/S/T/H/V  
**NO. OF FITMENTS** 59  
**PATTERN TYPE** NON-DIRECTIONAL

**FUEL** C-D  
**WET GRIP** C-E  
**NOISE** 72-75dB  
**UTQG** TREAD WEAR 500, TRACTION A, TEMPERATURE AA



**TERRATOURA® A/T**

	SECTION	PROFILE	RIM	LI/SR	EXTRA LOAD	PLY RATING	SIDEWALL MARKINGS*	CLASS	ROLLING RESISTANCE	WET GRIP	NOISE dB	NOISE GRADE	EAN
<b>14"</b>	155	65	14	75S	-	-	RWL	C1	TBC	TBC	TBC	TBC	TBC
<b>15"</b>	31	10.50	15	109T	-	6PR	RBL	C2	C	C	75dB	B	5060408164181
	225	70	15	112/109R	-	10PR	RWL	C2	D	D	74dB	B	5060408165430
	235	75	15	104/101T	-	6PR	RBL	C2	C	C	75dB	B	5060408163221
	235	75	15	110/107S	-	-	RWL	C2	TBC	TBC	TBC	TBC	TBC
<b>16"</b>	205	80	16	110/108T	-	8PR	RBL	C2	C	C	75dB	B	5060408161883
	215	65	16	109/105R	-	10PR	RWL	C2	D	D	74dB	B	5060408165300
	225	75	16	115/112S	-	10PR	RWL	C2	D	D	74dB	B	5060408165423
	235	70	16	106T	-	-	RWL	C1	D	E	72dB	B	5060408165324
	235	70	16	104/101T	-	6PR	RBL	C2	C	C	75dB	B	5060408163191
	235	85	16	120/116T	-	10PR	RBL	C2	C	C	75dB	B	5060408164112
	245	65	16	111S	-	10PR	RWL	C1	TBC	TBC	TBC	TBC	TBC
	245	70	16	111H	XL	-	RWL	C1	D	E	72dB	B	5060408165317
	245	70	16	113/110T	-	8PR	RBL	C2	C	C	75dB	B	5060408164136
	265	70	16	121/118S	-	-	RWL	C2	TBC	TBC	TBC	TBC	TBC
	265	70	16	121/118T	-	10PR	RBL	C2	C	C	75dB	B	5060408164167
	265	75	16	119/116R	-	-	RBL	C2	D	C	74dB	B	5060408163351
	265	75	16	119/116R	-	-	RWL	C2	D	C	74dB	B	5060408164471
	285	75	16	116/113R	-	-	RBL	C2	D	C	74dB	B	5060408163368
	285	75	16	116/113R	-	-	RBL	C2	D	C	74dB	B	5060408164495
<b>17"</b>	235	65	17	108V	XL	-	RBL	C1	D	C	72dB	B	5060408163337
	235	65	17	108V	XL	-	RWL	C1	D	C	72dB	B	5060408164396
	245	65	17	111/108T	-	8PR	RBL	C2	C	C	75dB	B	5060408164129
	245	65	17	111H	XL	-	RWL	C1	D	E	72db	B	5060408165355
	265	65	17	116T	XL	-	RBL	C1	D	B	73dB	B	5060408163245
	265	65	17	116/113T	-	8PR	RBL	C2	C	C	75dB	B	5060408164143
	265	65	17	120/117T	-	10PR	RBL	C2	C	C	75dB	B	5060408164150
	265	65	17	116T	XL	-	RWL	C1	D	B	73dB	B	5060408164440
	265	70	17	121/118T	-	10PR	RBL	C2	C	C	75dB	B	5060408164174
	265	70	17	118/115Q	-	-	RWL	C2	POR	POR	POR	POR	5060408165485
<b>18"</b>	285	70	17	121/118R	-	8PR	RWL	C2	POR	POR	POR	POR	5060408165331
	315	70	17	121/118R	-	8PR	RWL	C2	POR	POR	POR	POR	5060408165348
	235	60	18	107H	XL	-	RWL	C1	D	E	72dB	B	5060408165386
	255	55	18	109H	XL	-	RBL	C1	D	C	72dB	B	5060408163290
	255	55	18	109H	XL	-	RWL	C1	D	C	72dB	B	5060408164402
	255	60	18	112H	XL	-	RWL	C1	D	C	72dB	B	5060408164426
	255	60	18	112H	XL	-	RBL	C1	D	C	72dB	B	5060408163283
	265	60	18	110T	-	-	RBL	C1	D	B	73dB	B	5060408163269
	265	60	18	110T	-	-	RWL	C1	D	B	73dB	B	5060408164433
	265	65	18	114T	-	-	RBL	C1	D	B	73dB	B	5060408163276
	265	65	18	117/114R	-	-	RBL	C2	D	C	74dB	B	5060408163382
	265	65	18	114T	-	-	RWL	C1	D	B	73dB	B	5060408164457
	265	65	18	117/114R	-	-	RWL	C2	D	C	74dB	B	5060408164464
	265	70	16	124/121R	-	-	RWL	C2	TBC	TBC	TBC	TBC	TBC
	285	60	18	118/115Q	-	8PR	RWL	C2	POR	POR	POR	POR	5060408165362
	285	65	18	125/122R	-	10PR	RWL	C3	E	A	74dB	B	5060408165379
<b>19"</b>	255	55	19	111H	XL	-	RBL	C1	D	C	72dB	B	5060408163306
	255	55	19	111H	XL	-	RWL	C1	D	C	72dB	B	5060408164419
<b>20"</b>	255	50	20	109V	XL	-	RBL	C1	D	C	72dB	B	5060408163320
	265	50	20	111V	XL	-	RWL	C1	D	B	73dB	B	5060408165256
	265	55	20	113T	XL	-	RWL	C1	D	B	73dB	B	5060408165478
	275	45	20	110V	XL	-	RBL	C1	D	B	73dB	B	5060408163344
	275	45	20	110V	XL	-	RWL	C1	D	E	73dB	B	5060408165393
	275	55	20	117V	XL	-	RWL	C1	D	E	73dB	B	5060408165409
	275	55	20	117V	XL	-	RBL	C1	D	B	73dB	B	5060408164334
	285	50	20	116H	XL	-	RBL	C1	D	B	73dB	B	5060408163313
	285	50	20	116H	XL	-	RWL	C1	D	B	73dB	B	5060408164488
<b>21"</b>	275	45	21	110V	XL	-	RBL	C1	D	B	73dB	B	5060408163252
<b>22"</b>	275	45	22	112H	XL	-	RWL	C1	D	E	73dB	B	5060408165416



# WINTOURA®



## SAFETY AND STABILITY IN ALL WINTER CONDITIONS FOR COMPACT VEHICLES

**The Wintoura is a directional high performance winter pattern, that provides safety, comfort and fuel efficiency.**

- Two wide circumferential grooves together with lateral channels and zig-zag sipes improve traction and lateral grip – dispersing water and increasing grip in icy and snowy conditions
- Angled tread block edges and varying pitch sizes actively help reduce noise emission
- Highly flexible carcass construction provides a smooth and comfortable drive
- Added rim protection rib up to 60 series



### Italiano

#### WINTOURA

Sicurezza e stabilità in tutte le condizioni climatiche invernali per veicoli compatti.

Wintoura è un modello invernale direzionale ad alte prestazioni, che garantisce sicurezza, comfort ed efficienza.

- Due ampie scanalature circolari unite ai canali laterali e alle lamelle a zig-zag migliorano la trazione e l'aderenza laterale ottimizzando la dispersione dell'acqua e aumentando l'attrito su ghiaccio e neve.
- Bordi angolari del battistrada e il disegno a passo variabile contribuiscono attivamente a ridurre l'emissione acustica.
- La struttura altamente flessibile della carcassa offre una guida fluida e confortevole.
- Aggiunto bordo di protezione del cerchio fino alla serie-60.

### Deutsch

#### WINTOURA

Sicherheit und Stabilität unter allen Winterbedingungen für Kompaktfahrzeuge

Der direktionale Wintoura Hochleistungsreifen bietet Sicherheit, Komfort und Wirtschaftlichkeit.

- Zwei breite umlaufende Profilrillen sorgen zusammen mit Querrillen und zick-zack Lamellen für eine gesteigerte Traktion und Kurvengrip – Wasser wird abgeführt und die Haftung auf Eis und Schnee verbessert.
- Abgeschrägte Profilblock-Kanten und unterschiedliche Blockgrößen reduzieren aktiv die Geräuscentwicklung.
- Eine hochflexible Karkasskonstruktion sorgt für eine ruhige und komfortable Fahrt.
- Zusätzliche Felgenschutzleiste ab einem Reifenquerschnitt von 60.

### Español

#### WINTOURA

Seguridad y estabilidad en todas las condiciones invernales para vehículos compactos.

Wintoura es un neumático con un patrón de banda direccional de alto rendimiento para el invierno que brinda seguridad, comodidad y eficiencia de combustible.

- Los dos anchos surcos circunferenciales combinados con los canales laterales y los surcos en zigzag mejoran la tracción y el agarre lateral, dispersando el agua y optimizando el agarre en condiciones de nieve y hielo.
- Los flancos de los bloques dispuestos en distintos ángulos y los diversos tamaños de paso contribuyen activamente a reducir la emisión de ruido.
- Su estructura altamente flexible ofrece una conducción suave y confortable.
- Nervadura de protección de llanta a partir de la serie 60.



**SIZE RANGE** 14" - 17"  
**SPEED RATINGS** T / H / V  
**NO. OF SIZES** 40  
**PATTERN TYPE** DIRECTIONAL

**FUEL** D  
**WET GRIP** C  
**NOISE** 71-72dB

\*Features rim protection rib



WINTOURA

	SECTION	PROFILE	RIM	LI/SR	EXTRA LOAD	CLASS	ROLLING RESISTANCE	WET GRIP	NOISE dB	NOISE GRADE	EAN
14"	155	65	14	75T	-	C1	D	C	71dB	B	5060408165126
	165	60	14	79H	XL	C1	D	C	71dB	B	5060408165133
	165	70	14	81 T	-	C1	D	C	71dB	B	6950306329234
	175	65	14	82T	-	C1	D	C	71dB	B	6950306329258
	175	65	14	86T	XL	C1	D	C	71dB	B	6950306347764
	175	70	14	88T	XL	C1	D	C	71dB	B	6950306329241
	185	60	14	82T	-	C1	D	C	71dB	B	6950306323348
	185	65	14	86T	-	C1	D	C	71dB	B	6950306329265
15"	165	60	15	77H	-	C1	D	C	71dB	B	5060408165140
	165	65	15	81T	-	C1	D	C	71dB	B	5060408164907
	175	65	15	84T	-	C1	D	C	71dB	B	6950306323324
	185	55	15	82T	XL	C1	D	C	71dB	B	6950306348464
	185	55	15	86H	XL	C1	D	C	71dB	B	6950306348136
	185	55	15	86T	XL	C1	D	C	71dB	B	6950306348129
	185	60	15	84T	-	C1	D	C	71dB	B	6950306347870
	185	60	15	88T	XL	C1	D	C	71dB	B	6950306347887
	185	65	15	88H	-	C1	D	C	71dB	B	6950306329272
	185	65	15	88T	-	C1	D	C	71dB	B	6950306329555
	185	65	15	92T	XL	C1	D	C	71dB	B	6950306329579
	195	50	15	86H	XL	C1	D	C	72dB	B	6950306334146
	195	55	15	89H	XL	C1	D	C	72dB	B	6950306323492
	195	60	15	88H	-	C1	D	C	72dB	B	6950306361876
	195	65	15	91H	-	C1	D	C	72dB	B	6950306329586
	195	65	15	91T	-	C1	D	C	72dB	B	6950306330483
16"	195	65	15	95T	XL	C1	D	C	72dB	B	6950306334092
	185	55	16	87T	XL	C1	D	C	71dB	B	6950306323478
	195	55	16	87H	-	C1	D	C	72dB	B	6950306348471
	195	55	16	87T	-	C1	D	C	72dB	B	6950306348730
	195	55	16	91H	XL	C1	D	C	72dB	B	6950306348761
	205	55	16	91H	-	C1	D	C	72dB	B	6950306362590
	205	55	16	91T	-	C1	D	C	72dB	B	6950306362583
	205	55	16	94H	XL	C1	D	C	72dB	B	6950306334139
	205	60	16	92H	-	C1	D	C	72dB	B	6950306347986
	205	60	16	96H	XL	C1	D	C	72dB	B	6950306361906
	215	60	16	99H	XL	C1	D	C	72dB	B	6950306323379
	215	65	16	102H	XL	C1	D	C	72dB	B	6950306361814
	215	65	16	98H	-	C1	D	C	72dB	B	6950306347856
	225	60	16	102V	XL	C1	D	C	72dB	B	6950306323362
17"	215	60	17	96H	-	C1	D	C	72dB	B	6950306323447
	225	60	17	103V	XL	C1	D	C	72dB	B	6950306323416

Regulation (EU) 2020/740





# WINTOURA<sup>+</sup>



## EXCEPTIONAL TRACTION AND DRIVING EXPERIENCE FOR HIGH-PERFORMANCE VEHICLES

**Wintoura+ is a UHP asymmetric tread pattern, optimised for safety, performance and a comfortable drive.**

- Specially-designed three-dimensional sipes and lateral grooves deliver increased traction and excellent braking performance in all winter conditions
- Three main non-uniform circumferential grooves and solid-joined outer blocks provide efficient water dispersion and a precise steering response
- Dual circumferential tread ribs with varying pitch sizes provide reduced noise emission and increased cornering accuracy
- Integrated rim protection to prevent wheel damage



### Italiano

**WINTOURA+**  
Esperienza di guida e trazione eccezionali per veicoli ad alte prestazioni.

Wintoura+ è un modello di battistrada asimmetrico UHP, ottimizzato per offrire massima sicurezza unita a prestazioni eccellenti e guida confortevole.

- Le lamelle e le scanalature laterali tridimensionali appositamente progettate offrono una maggiore trazione ed eccezionali prestazioni di frenata in tutte le condizioni climatiche invernali.
- Tre principali scanalature circolari non uniformi e la disposizione intrecciata dei solidi blocchi esterni consentono un'efficiente rimozione dell'acqua e una risposta precisa dello sterzo.
- Le doppie nervature circolari della battistrada con disegno a passo variabile consentono una ridotta emissione acustica e una maggiore precisione in curva.
- Protezione integrata del cerchio per evitare danni alla ruota.

### Deutsch

**WINTOURA+**  
Überragende Traktion und einzigartiges Fahrerlebnis für Hochleistung-Fahrzeuge

Wintoura+ ist ein asymmetrischer UHP Reifen, optimiert für Sicherheit, Leistungsfähigkeit und ein komfortables Fahrerlebnis.

- Speziell entwickelte 3D-Lamellen und Querrillen sorgen für eine erhöhte Haftung und herausragende Bremsleistung bei allen Winterbedingungen.
- Drei ungleichmäßige umlaufende Profilrillen und stabile, miteinander verbundene, äußere Profilblöcke sorgen für eine hervorragende Wasserableitung und eine direkte Lenkansprache.
- Doppelte umlaufende Profilrippen mit unterschiedlichen Blockgrößen reduzieren die Geräuschentwicklung und erhöhen die Kurvenstabilität.
- Integrierte Felgenschutzleiste gegen Beschädigungen.

### Español

**WINTOURA+**  
Tracción y experiencia de conducción excepcionales para vehículos de altas prestaciones.

Wintoura+ es un neumático con un patrón de banda asimétrico de rendimiento ultra alto optimizado para reforzar la seguridad, el rendimiento y la comodidad.

- Los surcos tridimensionales y los surcos laterales de diseño especial ofrecen mayor tracción y una excelente eficacia de frenado en todas las condiciones invernales.
- Los tres surcos circunferenciales no uniformes principales y los sólidos bloques exteriores unidos garantizan una evacuación excepcional del agua y una respuesta de la dirección altamente precisa.
- Las nervaduras de banda dobles circunferenciales con diversos tamaños de paso contribuyen a reducir el ruido e incrementar la precisión en las curvas.
- Protección de llanta integrada para prevenir daños en la rueda.



**SIZE RANGE** 16" - 21"  
**SPEED RATINGS** H / V / W  
**NO. OF SIZES** 51  
**PATTERN TYPE** ASYMMETRIC

**FUEL** C  
**WET GRIP** C-D  
**NOISE** 70-73dB



WINTOURA +

	SECTION	PROFILE	RIM	LI/SR	EXTRA LOAD	CLASS	ROLLING RESISTANCE	WET GRIP	NOISE dB	NOISE GRADE	EAN
16"	195	45	16	84H	XL	C1	C	D	71dB	B	6950306323560
	195	50	16	88H	XL	C1	C	D	71dB	B	6950306323553
	205	45	16	87H	XL	C1	C	D	70dB	B	5060408164921
	205	50	16	87H	-	C1	C	D	70dB	B	5060408165157
	215	45	16	90H	XL	C1	C	C	71dB	B	6950306323584
	215	55	16	97V	XL	C1	C	C	71dB	B	6950306323522
	225	55	16	99V	XL	C1	C	C	71dB	B	6950306323508
17"	205	40	17	84V	XL	C1	C	D	70dB	B	5060408164938
	205	45	17	88V	XL	C1	C	C	71dB	B	6950306323577
	205	50	17	93V	XL	C1	C	C	71dB	B	6950306323621
	205	55	17	95V	XL	C1	C	C	71dB	B	6950306323546
	215	40	17	87V	XL	C1	C	C	70dB	B	5060408164945
	215	45	17	91V	XL	C1	C	C	71dB	B	6950306323645
	215	50	17	95V	XL	C1	C	C	71dB	B	6950306323614
	215	55	17	98H	XL	C1	C	C	71dB	B	6950306349973
	215	55	17	98V	XL	C1	C	C	71dB	B	6950306349966
	225	45	17	94H	XL	C1	C	C	71dB	B	6950306362606
	225	45	17	94V	XL	C1	C	C	71dB	B	6950306334153
	225	50	17	98H	XL	C1	C	C	71dB	B	6950306360213
	225	50	17	98V	XL	C1	C	C	71dB	B	6950306324307
	225	55	17	101V	XL	C1	C	C	71dB	B	6950306360947
	235	45	17	97V	XL	C1	C	C	71dB	B	6950306361821
	235	55	17	103V	XL	C1	C	C	71dB	B	6950306323539
	245	40	17	95V	XL	C1	C	C	70dB	B	5060408162101
	245	45	17	99V	XL	C1	C	C	71dB	B	6950306323638
	215	55	18	99V	XL	C1	C	C	70dB	B	5060408164952
	225	40	18	92H	XL	C1	C	C	71dB	B	6950306362620
18"	225	40	18	92V	XL	C1	C	C	71dB	B	6950306334160
	225	45	18	95V	XL	C1	C	C	71dB	B	6950306360831
	235	40	18	95V	XL	C1	C	C	70dB	B	5060408164976
	235	45	18	98V	XL	C1	C	C	71dB	B	6950306323652
	235	50	18	101V	XL	C1	C	C	70dB	B	5060408164983
	245	40	18	97V	XL	C1	C	C	71dB	B	6950306334177
	245	45	18	100V	XL	C1	C	C	71dB	B	6950306360909
	255	35	18	94V	XL	C1	C	C	70dB	A	5060408164990
	225	40	19	93V	XL	C1	C	C	71dB	B	5060408165164
	225	45	19	96V	XL	C1	C	C	70dB	B	5060408164969
19"	235	35	19	91V	XL	C1	C	C	71dB	B	6950306323720
	245	40	19	98V	XL	C1	C	C	71dB	B	6950306323676
	245	45	19	102V	XL	C1	C	C	71dB	B	6950306323669
	255	35	19	96V	XL	C1	C	C	70dB	A	5060408165003
	255	40	19	100V	XL	C1	C	C	73dB	B	6950306323713
	275	35	19	100W	XL	C1	C	C	71dB	B	5060408163979
	275	40	19	105W	XL	C1	C	C	71dB	B	5060408163993
	245	35	20	95W	XL	C1	TBC	TBC	TBC	TBC	TBC
20"	245	40	20	99W	XL	C1	C	C	71dB	B	5060408164044
	255	35	20	97W	XL	C1	C	C	71dB	B	5060408165188
	255	40	20	101W	XL	C1	C	C	71dB	B	5060408164037
	275	35	20	102W	XL	C1	C	C	71dB	B	5060408163986
	295	35	20	105W	XL	C1	C	C	71dB	A	5060408164006
21"	295	35	21	107V	XL	C1	C	C	71dB	A	5060408164013





# WINTOURA<sup>®</sup> SUV



## OPTIMAL STABILITY, PERFORMANCE & COMFORT PROVIDES CONFIDENCE AGAINST THE ELEMENTS

**The Wintoura SUV tyre has a specially designed directional tread, providing superb traction and snow performance.**

- Two main circumferential jagged grooves, lateral channels, and 3D sipes provide efficient clearing of water and extra grip on snow and ice
- Varying pitch sizes provide improved riding comfort and a quieter drive
- A closed tread centre produces harmonic wear and high running mileage
- Robust carcass construction is suitable for heavy loads and the angled edges of outer shoulder blocks ensure even and harmonic tyre wear



**ADVANCED  
WINTER GRIP**



**IMPROVED SNOW  
AND ICE TRACTION**



**DURABLE  
CONSTRUCTION**

### Italiano

WINTOURA SUV  
Massima stabilità, prestazioni ottimali e comfort di guida garantiscono sicurezza contro tutti gli elementi atmosferici.

Lo pneumatico Wintoura SUV dispone di un battistrada direzionale appositamente progettato in grado di offrire una trazione straordinaria e prestazioni eccezionali sulla neve.

- Due principali scanalature circonfenziali frastagliate, canali laterali e lamelle 3D forniscono un'efficiente rimozione dell'acqua e aderenza extra su neve e ghiaccio.
- La geometria a passo variabile assicura un miglior comfort e una guida più silenziosa.
- Il disegno centrale chiuso del battistrada garantisce un'usura uniforme e un'elevata resa nella percorrenza.
- La robusta struttura della carcassa è adatta a carichi pesanti e i bordi angolati dei blocchi esterni delle spalle garantiscono un'usura uniforme e armonica dello pneumatico.
- Protezione integrata del cerchio per evitare danni alla ruota.

### Deutsch

WINTOURA SUV  
Optimale Stabilität, Leistungsfähigkeit und Fahrkomfort für ein hohes Vertrauen bei schwierigen Bedingungen.

Der Wintoura SUV verfügt über ein speziell entwickeltes direktionales Laufflächen-Profil für hervorragende Haftung und Leistungsfähigkeit auf Schnee.

- Zwei abgestufte umlaufende Profilrillen, Querrillen und 3D-Lamellen sorgen für eine effektive Wasserableitung und erhöhte Haftung auf Schnee und Eis.
- Unterschiedlich breite Profilblöcke verbessern den Fahrkomfort und sorgen für eine ruhige Reise.
- Ein eher geschlossenes Profil in der Reifenmitte für gleichmäßigen Verschleiß und eine erhöhte Laufleistung.
- Stabile Karkass-Konstruktion für hohe Belastungen und abgeschrägte Kanten der Schulterblöcke sorgen für einen gleichmäßigen und harmonischen Verschleiß.
- Integrierte Felgenschutzleiste gegen Beschädigungen.

### Español

WINTOURA SUV  
Estabilidad, rendimiento y confort de conducción óptimos que ofrecen confianza frente a los elementos.

El neumático Wintoura SUV cuenta con una banda de diseño especial que ofrece una tracción y un rendimiento en nieve excepcionales.

- Los dos surcos dentados circunferenciales principales, los canales laterales y los surcos tridimensionales permiten evacuar el agua de forma eficiente y ofrecen un agarre excepcional en condiciones de nieve y hielo.
- Los diversos tamaños de paso mejoran el confort de la conducción y proporcionan una experiencia silenciosa.
- Un centro de banda con bloques poco espaciados produce un desgaste uniforme y una durabilidad sensacional.
- Su estructura robusta es apta para cargas pesadas y los flancos de los bloques del talón exterior dispuestos en distintos ángulos contribuyen al desgaste uniforme del neumático.
- Protección de llanta integrada para prevenir daños en la rueda.



**SIZE RANGE** 16" - 22"  
**SPEED RATINGS** H / V  
**NO. OF SIZES** 21  
**PATTERN TYPE** DIRECTIONAL

**FUEL** C  
**WET GRIP** C  
**NOISE** 69-72dB



WINTOURA SUV

	SECTION	PROFILE	RIM	LI/SR	EXTRA LOAD	CLASS	ROLLING RESISTANCE	WET GRIP	NOISE dB	NOISE GRADE	EAN
16"	215	65	16	98H	-	C1	C	C	71dB	B	6950306362446
	215	70	16	104H	XL	C1	C	C	71dB	B	6950306361968
17"	225	65	17	106H	XL	C1	C	C	71dB	B	6950306361975
	235	60	17	106H	XL	C1	C	C	71dB	B	6950306323768
	235	65	17	108H	XL	C1	C	C	71dB	B	6950306362422
	245	65	17	111V	XL	C1	C	C	71dB	B	6950306323751
	265	65	17	116H	XL	C1	C	C	72dB	B	6950306323744
18"	225	55	18	102V	XL	C1	C	C	71dB	B	6950306323867
	225	60	18	104V	XL	C1	C	C	69dB	A	5060408165010
	235	55	18	104V	XL	C1	C	C	71dB	B	6950306323775
	235	60	18	107H	XL	C1	C	C	71dB	B	6950306362477
	255	55	18	109V	XL	C1	C	C	71dB	B	6950306334184
19"	235	45	19	99V	XL	C1	C	C	70dB	B	5060408165195
	235	55	19	105V	XL	C1	C	C	71dB	B	6950306323874
	255	50	19	107V	XL	C1	C	C	69dB	A	5060408165027
	285	45	19	111V	XL	C1	C	C	69dB	A	5060408165034
20"	245	45	20	103W	XL	C1	C	C	70dB	B	5060408165201
	255	50	20	109V	XL	C1	C	C	71dB	B	5060408164020
	275	40	20	106V	XL	C1	C	C	72dB	B	6950306323898
	315	35	20	110V	XL	C1	C	C	71dB	A	5060408164051
22"	275	40	22	108V	XL	C1	C	C	71dB	B	5060408165218

Regulation (EU) 2020/740





# WINTOURA<sup>®</sup> VAN



## A BALANCE OF DURABILITY AND EXCEPTIONAL WINTER GRIP - PERFORMANCE WHERE IT'S NEEDED MOST

**Wintoura VAN has an optimised symmetric tread pattern designed for high traction and good braking performance, even in severe winter conditions.**

- Three circumferential tapered main grooves and increased tread depth provide improved traction and exceptional performance in snow and soft/muddy grounds
- Robust interlocked centre tread blocks with three-dimensional sipes provide reliable performance in all winter conditions
- Reinforced shoulder and sidewalls, with a solid carcass and belt construction provide additional damage protection and increased heavy load endurance



### Italiano

**WINTOURA VAN**  
Un equilibrio perfetto di durabilità ed eccezionale aderenza in condizioni climatiche invernali, per prestazioni dov'è più importante.

Wintoura VAN offre un battistrada dal design simmetrico ottimizzato, progettato per elevate trazioni e ottime prestazioni di frenata, anche in condizioni invernali rigide.

- Tre principali scanalature circonferenziali coniche e una maggiore profondità del battistrada offrono una migliore trazione e prestazioni eccezionali su neve e terreni morbidi/fangosi.
- Robusti blocchi centrali con punti di interblocco e tre lamelle tridimensionali garantiscono prestazioni affidabili in tutte le condizioni climatiche invernali.
- La spalla e i fianchi rinforzati, con una solida struttura della carcassa e del pacco cintura, garantiscono una maggiore protezione dai danni e un'aumentata resistenza ai carichi pesanti.

### Deutsch

**WINTOURA VAN**  
Eine ausgeglichene Balance zwischen Haltbarkeit und hervorragender Winter-Haftung - Leistung wo sie am meisten benötigt wird.

Der Wintoura VAN verfügt über ein optimiertes symmetrisches Laufflächen-Profil für erhöhte Traktion und gute Bremsleistung auch unter schwierigen Winter-Bedingungen.

- Drei umlaufende konische Hauptprofilrillen und eine größere Profiltiefe sorgen für verbesserte Traktion und außergewöhnliche Leistung bei Schnee und auf weichen/matschigen Untergründen.
- Solide verbundene Profilrippen in der Laufflächenmitte, versehen mit dreidimensionalen Lamellen, garantieren zuverlässige Leistung unter allen winterlichen Bedingungen.
- Verstärkte Schultern und Seitenwände sorgen, zusammen mit einer stabilen Karkass- und Gürtelkonstruktion, für zusätzlichen Schutz vor Beschädigungen und erhöhter Beständigkeit bei hoher Belastung.

### Español

**WINTOURA VAN**  
Una combinación excepcional de durabilidad, agarre durante el invierno y rendimiento cuando más se necesita.

Wintoura VAN es un neumático con un patrón de banda simétrico optimizado diseñado para maximizar la tracción y la eficacia de frenado, incluso en las condiciones invernales más adversas.

- Tres surcos circunferenciales achaflanados y una mayor profundidad de banda mejoran la tracción y el rendimiento en terrenos nevados, blandos y enlodados.
- Los robustos bloques centrales entrelazados con tres surcos dimensionales proporcionan un rendimiento fiable en todas las condiciones invernales.
- El talón y las paredes laterales reforzados, con una estructura sólida, ofrecen protección adicional frente a los daños e incrementan la resistencia en condiciones de carga pesada.



**SIZE RANGE** 15" - 17"  
**SPEED RATINGS** R / S / T  
**NO. OF SIZES** 20  
**PATTERN TYPE** NON-DIRECTIONAL

**FUEL** C  
**WET GRIP** C-D  
**NOISE** 71dB



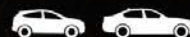
	SECTION	PROFILE	RIM	LI/SR	PLY RATING	CLASS	ROLLING RESISTANCE	WET GRIP	NOISE dB	NOISE GRADE	EAN
15"	195	70	15	104/102R	8PR	C2	C	D	71dB	B	6950306359125
	205	65	15	102/100T	6PR	C2	C	D	71dB	B	6950306358210
	215	65	15	104/102T	6PR	C2	C	D	71dB	B	6950306359132
	215	70	15	109/107R	8PR	C2	C	C	71dB	B	5060408165065
	215	70	15	109/107S	8PR	C2	C	C	71dB	B	5060408165072
	215	70	15	113/111R	8PR	C2	C	C	71dB	B	5060408165058
	225	70	15	112/110R	8PR	C2	C	C	71dB	B	6950306358449
16"	185	75	16	104/102R	8PR	C2	C	D	71dB	B	5060408165041
	195	60	16	99/97T	6PR	C2	C	D	71dB	B	6950306359156
	195	65	16	104/102R	8PR	C2	C	D	71dB	B	6950306358456
	195	75	16	107/105R	8PR	C2	C	D	71dB	B	6950306359118
	205	65	16	107/105R	8PR	C2	C	D	71dB	B	6950306358487
	215	60	16	103/101T	6PR	C2	C	D	71dB	B	6950306359163
	215	65	16	106/104T	6PR	C2	C	D	71dB	B	6950306358463
	215	65	16	109/107R	8PR	C2	C	D	71dB	B	6950306359231
	215	75	16	113/111R	8PR	C2	C	D	71dB	B	6950306358432
	225	65	16	112/110T	8PR	C2	C	C	71dB	B	6950306359149
17"	225	75	16	121/120R	10PR	C2	C	C	71dB	B	5060408165089
	235	65	16	115/113R	8PR	C2	C	C	71dB	B	6950306358470
	215	60	17	109/107T	8PR	C2	C	D	71dB	B	5060408165225

Regulation (EU) 2020/740





# ALLTOURA®



## PERFECTLY ENGINEERED TO PROVIDE DURABILITY AND PERFORMANCE ACROSS ALL SEASONS

**Alltoura 4-Seasons features a directional tread pattern and intelligent sipe design to provide exceptional performance, whatever the weather.**

- Directional tread pattern design improves traction and braking in wet-weather conditions.
- Specially formulated compound delivers dependable grip in the sub-zero, wet, and dry conditions.
- Intelligent sipe design provides efficient clearing of water and extra grip on snow and ice.
- 3PMSF certification for all-season confidence



ALL WEATHER  
TRACTION

ADVERSE WEATHER  
SAFETY

FUEL  
EFFICIENT

### Italiano

ALLTOURA

PERFETTAMENTE CONCEPITI PER FORNIRE DURATA E PRESTAZIONI IN OGNI STAGIONE.

Alltoura 4-Seasons presenta un battistrada direzionale e un design intelligente delle scanalature per offrire prestazioni eccezionali, indipendentemente dalle condizioni atmosferiche.

- Il design del battistrada direzionale migliora la tenuta e la frenata sul bagnato.
- La miscela appositamente formulata offre un'ottima e affidabile aderenza nelle condizioni sotto zero, bagnato e asciutto.
- Il design intelligente delle lamelle fornisce un'efficace dispersione dell'acqua e un'aderenza extra su neve e ghiaccio.
- Certificazione 3PMSF per la sicurezza in ogni stagione

### Deutsch

ALLTOURA

PERFEKT ENTWICKELT FÜR HALTBARKEIT UND LEISTUNG ÜBER ALLE JAHRESZEITEN HINWEG

Das Reifenmodell „Alltoura 4-Seasons“ zeichnet sich durch ein richtungsgebundenes Laufflächenprofil und ein intelligentes Lamellendesign aus, das bei jedem Wetter eine außergewöhnliche Leistung bietet.

- Das richtungsgebundene Laufflächenprofil verbessert die Bodenhaftung und das Bremsverhalten bei nassem Wetter.
- Die speziell entwickelte Mischung bietet zuverlässige Bodenhaftung bei Minusgraden sowie auf nasser und trockener Fahrbahn.
- Das intelligente Lamellendesign sorgt für eine effiziente Wasserverdrängung und zusätzlichen Halt auf Schnee und Eis.
- 3PMSF-Zertifizierung für ganzjähriges Vertrauen

### Español

ALLTOURA

NEUMÁTICO PERFECTAMENTE DISEÑADO PARA LOGRAR DURABILIDAD Y RENDIMIENTO EN TODAS LAS ESTACIONES

El patrón de banda direccional y el diseño inteligente de los sipes del Alltoura 4-Seasons ofrecen rendimiento sin importar el clima.

- El diseño del patrón de banda direccional mejora la tracción y el frenado en condiciones de lluvia.
- El compuesto formulado especialmente logra un agarre fiable en suelo seco, con lluvia o con temperaturas bajo cero.
- El diseño inteligente de los sipes drena el agua de manera eficiente y proporciona agarre extra en la nieve y el hielo.
- Con certificado 3PMSF (Three Peak Mountain Snowflake) que garantiza seguridad en todas las estaciones.



**SIZE RANGE** 14" - 19"  
**SPEED RATINGS** T / H / V / W / Y  
**NO. OF SIZES** 24  
**PATTERN TYPE** DIRECTIONAL

**FUEL** TBC  
**WET GRIP** TBC  
**NOISE** TBC



ALLTOURA 4-SEASONS

	SECTION	PROFILE	RIM	LI/SR	EXTRA LOAD	CLASS	ROLLING RESISTANCE	WET GRIP	NOISE dB	NOISE GRADE	EAN
14"	155	65	14	75T	-	C1	D	B	68dB	A	5060408163399
	165	65	14	79T	-	C1	D	B	68dB	A	5060408163405
	165	70	14	81T	-	C1	D	B	68dB	A	TBC
	175	65	14	84H	-	C1	D	B	68dB	A	TBC
	175	65	14	86H	XL	C1	D	B	68dB	A	5060408163429
15"	185	55	15	82H	-	C1	D	B	68dB	A	TBC
	185	60	15	88H	XL	C1	D	B	68dB	A	5060408163436
	185	65	15	92H	XL	C1	D	B	68dB	A	5060408163467
	195	50	15	82V	-	C1	D	B	68dB	A	TBC
	195	55	15	82H	-	C1	D	B	68dB	A	TBC
16"	195	65	15	91V	XL	C1	D	B	68dB	A	5060408163542
	195	45	16	84V	XL	C1	D	B	68dB	A	5060408163474
	195	55	16	91V	XL	C1	D	B	68dB	A	5060408163498
	205	55	16	91V	XL	C1	D	B	68dB	A	5060408163580
17"	205	60	16	96V	XL	C1	D	B	68dB	A	5060408163627
	205	50	17	93V	XL	C1	D	B	68dB	A	5060408163566
	205	55	17	95V	XL	C1	D	B	68dB	A	5060408163603
	215	55	17	98W	XL	C1	D	B	68dB	A	5060408163641
	225	45	17	94Y	XL	C1	D	B	68dB	A	5060408163702
18"	225	50	17	98W	XL	C1	D	B	68dB	A	5060408163726
	225	40	18	92Y	XL	C1	D	B	68dB	A	5060408163665
	225	45	18	95Y	XL	C1	D	B	68dB	A	5060408163672
19"	235	45	18	98W	XL	C1	D	C	69dB	A	5060408163658
	225	35	19	96Y	XL	C1	D	C	71dB	B	5060408163740

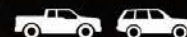
\*Further information coming soon

Regulation (EU) 2020/740





# ALLTOURA® H/T 4-SEASONS



## A PERFECT BALANCE OF PERFORMANCE, STABILITY, AND DURABILITY FOR HIGHWAY TERRAIN SUVs

Alltoura H/T 4-Seasons is an asymmetric SUV tread pattern delivering unquestionable performance in all weathers.

- Deep longitudinal grooves and a large contact patch provide excellent performance and safety in wet-weather conditions.
- Carefully considered tread block design provides stability and durability for heavier loads.
- Solid outer-shoulder blocks deliver a precise steering response.
- 3PMSF certification for all-season confidence.



ALL WEATHER  
TRACTION



ADVERSE WEATHER  
SAFETY



FUEL  
EFFICIENT

### Italiano

#### ALLTOURA H/T

UN EQUILIBRIO PERFETTO TRA PRESTAZIONI, STABILITÀ E DURABILITÀ PER SUV HIGHWAY/TERRAIN

Alltoura H/T 4-Seasons è un modello di battistrada per SUV asimmetrico che offre prestazioni ineccepibili in tutte le condizioni atmosferiche.

- Scanalature longitudinali profonde e una grande area di contatto offrono eccellenti prestazioni e sicurezza impareggiabile sul bagnato.
- Il design a blocchi del battistrada, attentamente progettato, offre stabilità e durata nel tempo per i carichi più pesanti.
- I solidi blocchi sulle spalle esterne offrono una precisa risposta dello sterzo.
- Certificazione 3PMSF per la sicurezza in ogni stagione

### Deutsch

#### ALLTOURA H/T

EINE PERFEKTE BALANCE VON LEISTUNG, STABILITÄT UND HALTBARKEIT FÜR SUVs AUF DER AUTOBAHN UND IM GELÄNDE

Das Reifenmodell „Alltoura H/T 4-Seasons“ hat ein asymmetrisches SUV-Laufflächenprofil, das bei jedem Wetter eine unbestreitbare Leistung bietet.

- Tiefe Längsrillen und eine große Aufstandsfläche sorgen für hervorragende Leistung und Sicherheit bei nassem Wetter.
- Das sorgfältig durchdachte Profilblockdesign bietet Stabilität und Beständigkeit für schwerere Lasten.
- Solide äußere Schulterblöcke liefern ein präzises Lenkverhalten.
- 3PMSF-Zertifizierung für ganzjähriges Vertrauen.

### Español

#### ALLTOURA H/T

EQUILIBRIO PERFECTO DE RENDIMIENTO, ESTABILIDAD Y DURABILIDAD EN NEUMÁTICOS PARA CARRETERA PARA SUV

El neumático Alltoura H/T 4-Seasons para SUV tiene un patrón de banda asimétrico que ofrece un rendimiento indiscutible en todo tipo de clima.

- Entalladuras longitudinales profundas y una gran área de contacto ofrecen excelente rendimiento y seguridad en condiciones de lluvia.
- El diseño del bloque de banda ha sido estudiado cuidadosamente para ofrecer estabilidad y durabilidad para cargas más pesadas.
- Los bloques del hombro externo sólidos logran una respuesta precisa de la dirección.
- Con certificado 3PMSF (Three Peak Mountain Snowflake) que garantiza seguridad en todas las estaciones.



**SIZE RANGE** 16" - 19"  
**SPEED RATINGS** H / V / W  
**NO. OF SIZES** 12  
**PATTERN TYPE** ASYMMETRIC

**FUEL** TBC  
**WET GRIP** TBC  
**NOISE** TBC



	SECTION	PROFILE	RIM	LI/SR	EXTRA LOAD	CLASS	ROLLING RESISTANCE	WET GRIP	NOISE dB	NOISE GRADE	EAN
16"	215	65	16	102V	XL	C1	TBC	TBC	TBC	TBC	5060408163771
	235	60	16	104V	XL	C1	TBC	TBC	TBC	TBC	5060408163825
17"	215	60	17	96H	-	C1	TBC	TBC	TBC	TBC	TBC
	225	60	17	TBC	TBC	C1	TBC	TBC	TBC	TBC	TBC
	225	65	17	TBC	TBC	C1	TBC	TBC	TBC	TBC	TBC
	215	65	17	103V	XL	C1	TBC	TBC	TBC	TBC	TBC
	235	55	17	103V	XL	C1	TBC	TBC	TBC	TBC	5060408163795
	235	65	17	108W	XL	C1	TBC	TBC	TBC	TBC	5060408163856
18"	215	55	18	99V	XL	C1	TBC	TBC	TBC	TBC	5060408163757
	225	55	18	102V	XL	C1	TBC	TBC	TBC	TBC	5060408163788
	235	55	18	104V	XL	C1	TBC	TBC	TBC	TBC	TBC
	235	60	18	107W	XL	C1	TBC	TBC	TBC	TBC	5060408163832

\*Further information coming soon

Regulation (EU) 2020/740

ALLTOURA® H/T 4-SEASONS







## A CAREFULLY CONSIDERED BALANCE OF LONGEVITY, RELIABILITY, AND ALL-SEASON PERFORMANCE FOR LIGHT COMMERCIAL VEHICLES

**Vantoura 4-Seasons is an asymmetric light commercial van tyre that has been specifically designed to provide year-round performance and durability, whatever the weather.**

- A specially formulated compound provides a blend of durability and reliability in all weather conditions.
- Reinforced shoulders and sidewalls with a solid carcass construction provide damage protection and increased endurance under heavy load.
- 3PMSF certification for all-season confidence.



**ALL WEATHER  
TRACTION**



**DURABLE  
CONSTRUCTION**



**HIGH ENDURANCE  
LOAD**

### Italiano

#### VANTOURA 4 SEASONS

UN EQUILIBRIO ATTENTAMENTE STUDIATO FRA DURATA, AFFIDABILITÀ E PRESTAZIONI IN OGNI STAGIONE PER I VEICOLI COMMERCIALI LEGGERI

Vantoura 4-Seasons è uno pneumatico commerciale asimmetrico per veicoli commerciali leggeri, appositamente progettato per offrire prestazioni e durata tutto l'anno, indipendentemente dalle condizioni atmosferiche.

- Una miscela appositamente formulata fornisce un mix di durata e affidabilità in tutte le condizioni atmosferiche.
- Spalle e fianchi rinforzati con una solida struttura della carcassa offrono protezione contro i danni e una maggiore resistenza sotto carichi pesanti.
- Certificazione 3PMSF per la sicurezza in ogni stagione

### Deutsch

#### VANTOURA 4 SEASONS

EIN SORGFÄLTIG ABGEWOGENES VERHÄLTNISS VON LANGLEBIGKEIT, ZUVERLÄSSIGKEIT UND GANZJAHRESLEISTUNG FÜR LEICHTE NUTZFAHRZEUGE

Das Reifenmodell „Vantoura 4-Seasons“ ist ein asymmetrischer Reifen für Kleintransporter, der speziell dafür entwickelt wurde, bei jedem Wetter das ganze Jahr über Leistung und Beständigkeit zu bieten.

- Eine speziell formulierte Mischung bietet eine Mischung aus Haltbarkeit und Zuverlässigkeit bei jedem Wetter.
- Verstärkte Schultern und Seitenwände mit einer soliden Karkass-Konstruktion bieten Schutz vor Beschädigungen und erhöhte Ausdauer unter schwerer Belastung.
- 3PMSF-Zertifizierung für ganzjähriges Vertrauen

### Español

#### VANTOURA 4 SEASONS

EQUILIBRIO CUIDADOSAMENTE ESTUDIADO DE LONGEVIDAD, FIABILIDAD Y RENDIMIENTO EN TODAS LAS ESTACIONES PARA VEHÍCULOS COMERCIALES LIGEROS

El neumático Vantoura 4-Seasons para vehículos comerciales ligeros tiene un patrón asimétrico y ha sido diseñado específicamente para ofrecer rendimiento y durabilidad todo el año, sin importar el clima.

- El compuesto ha sido formulado especialmente para ofrecer una combinación de durabilidad y fiabilidad en todo tipo de clima.
- Hombros reforzados y paredes laterales con un cuerpo sólido protegen del daño y ofrecen mayor resistencia a las cargas pesadas.
- Con certificado 3PMSF (Three Peak Mountain Snowflake) que garantiza seguridad en todas las estaciones.



**SIZE RANGE** 14" - 17"  
**SPEED RATINGS** R / T  
**NO. OF SIZES** 15  
**PATTERN TYPE** NON-DIRECTIONAL

**FUEL** C-D  
**WET GRIP** A-B  
**NOISE** 69-70dB



	SECTION	PROFILE	RIM	LI/SR	PLY RATING	CLASS	ROLLING RESISTANCE	WET GRIP	NOISE dB	NOISE GRADE	EAN
<b>14"</b>	165	70	14	81T	-	C2	C	A	70dB	A	5060408163955
<b>15"</b>	195	70	15	104/102R	8PR	C2	D	B	69dB	A	5060408163900
	215	65	15	104/102T	6PR	C2	C	A	69dB	A	TBC
	225	70	15	112/110R	8PR	C2	C	A	70dB	A	5060408165270
<b>16"</b>	185	75	16	102/104R	8PR	C2	D	B	69dB	A	TBC
	195	65	16	104/102T	8PR	C2	D	B	69dB	A	5060408163894
	195	75	16	110/108R	10PR	C2	D	B	69dB	A	5060408163887
	205	65	16	107/105T	8PR	C2	D	B	69dB	A	5060408163917
	205	75	16	113/111R	10PR	C2	D	B	69dB	A	5060408165263
	215	65	16	109/107T	8PR	C2	C	A	69dB	A	5060408163924
	215	75	16	116/114R	8PR	C2	C	A	69dB	A	TBC
	225	65	16	112/110T	8PR	C2	C	A	70dB	A	5060408163948
	225	75	16	121/120R	10PR	C2	C	A	70dB	A	TBC
<b>17"</b>	235	65	16	115/113R	8PR	C2	C	A	70dB	A	5060408163962
	215	60	17	109/107T	8PR	C2	C	A	69dB	A	TBC

\*Further information coming soon

Regulation (EU) 2020/740



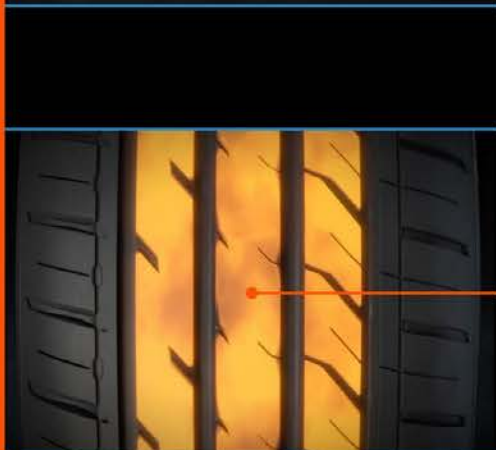
# TECHNICAL PRODUCT FEATURES



## REINFORCED SIDEWALLS

Extended rigid crown ply and flexible sidewalls provide a consistent wear profile and maximise surface contact with the road.

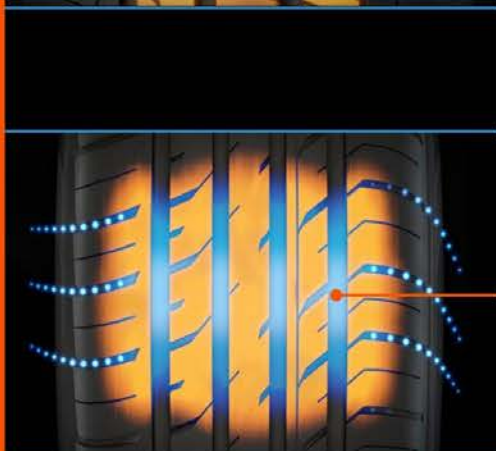
**DX240, DX390, DX640, Protoura Sport, DX740, DX420, DX440, Wintoura, Wintoura+, WintouraSUV, WintouraVAN, Alltoura, Alltoura H/T, Vantoura 4-Seasons**



## DYNAMIC TREAD DESIGN

Core to the range is a solid central tread block design. The inner sections work dynamically, adapting the tyre's performance throughout the tread wear and the life of the tyre.

**DX240, DX390, DX640, Protoura Sport, DX740, DX420, DX440, Wintoura, Wintoura+, WintouraSUV, WintouraVAN, Alltoura, Alltoura H/T, Vantoura 4-Seasons**



## CIRCUMFERENTIAL GROOVES

Wide circumferential grooves channel water away from the contact patch delivering optimum traction whilst minimising the chance of aquaplaning.

**DX240, DX390, DX640, Protoura Sport, DX740, DX420, DX440, Wintoura, Wintoura+, WintouraSUV, WintouraVAN, Alltoura, Alltoura H/T, Vantoura 4-Seasons**



## DEEP OUTER SIPES

Deep outer sipes work with the tyre to maximise water dissipation and increase traction in wet conditions.

**DX240, DX390, DX640, Protoura Sport, DX740, DX420, DX440, Wintoura, Wintoura+, WintouraSUV, WintouraVAN, Alltoura, Alltoura H/T, Vantoura 4-Seasons**



## RIM PROTECTION FLANGE

Integrated rim protection flange offers premium protection to alloy wheels from everyday road damage.

**DX240, DX390, DX640, Protoura Sport, DX740, DX420, DX440, Wintoura, Wintoura+, WintouraSUV, WintouraVAN, Alltoura, Alltoura H/T, Vantoura 4-Seasons**



## SHOULDER BLOCKS

Large, interconnected shoulder blocks help to maintain consistent contact with the road providing exceptional grip in all weathers.

**DX240, DX390, DX640, Protoura Sport, DX740, DX420, DX440, Wintoura, Wintoura+, WintouraSUV, WintouraVAN, Alltoura, Alltoura H/T, Vantoura 4-Seasons**



## VARYING TREAD BLOCKS

Varying tread block sizes are randomly arranged to restrict unwanted repetitive sound frequencies.

**DX240, DX390, DX640, Protoura Sport, DX740, DX420, DX440, Wintoura, Wintoura+, WintouraSUV, WintouraVAN, Alltoura, Alltoura H/T, Vantoura 4-Seasons**



## ENCLOSED OUTER GROOVES

Enclosed outer grooves counter sound leakage from the side of the tyre providing a more comfortable, quiet drive.

**DX240, DX390, DX640, Protoura Sport, DX740, DX420, DX440, Wintoura, Wintoura+, WintouraSUV, WintouraVAN, Alltoura, Alltoura H/T, Vantoura 4-Seasons**





# LOAD INDEX CHART

The load index is a number that indicates the maximum weight that a tyre has been manufactured to support when properly inflated. The higher the load index, the greater its load-carrying capability is.

When replacing the tyre, it is crucial to check that the load index either meets or exceeds the original equipment. Doing this ensures that the vehicle is able to safely carry the load that it was designed to handle.

LOAD INDEX	KG MAX LOAD PER TYRE	LOAD INDEX	KG MAX LOAD PER TYRE	LOAD INDEX	KG MAX LOAD PER TYRE
62	265	84	500	106	950
63	272	85	515	107	975
64	280	86	530	108	1000
65	290	87	545	109	1030
66	300	88	560	110	1060
67	307	89	580	111	1090
68	315	90	600	112	1120
69	325	91	615	113	1150
70	335	92	630	114	1180
71	345	93	650	115	1215
72	355	94	670	116	1250
73	365	95	690	117	1285
74	375	96	710	118	1320
75	387	97	730	119	1360
76	400	98	750	120	1400
77	412	99	775	121	1450
78	425	100	800	122	1500
79	437	101	825	123	1550
80	450	102	850	124	1600
81	462	103	875	125	1650
82	475	104	900	126	1700
83	487	105	925		

Light Truck (LT) tyres include two load indexes on the sidewall. This is due to the fact that these tyres are fitted to vehicles that often have dual rear wheels. For example, a dual load index of 106/104 means that the first load index is relevant for single wheel applications (950 kg per tyre), and the second number will apply when dual wheels are fitted (900 kg per tyre).

Single wheel indexes are lower than the dual-wheel applications to ensure that the vehicle can continue to carry the load should one tyre fail, or is at least able to carry a suitable weight of the load in the event of pressure discrepancies between the pair.



# SPEED RATING CHART

The speed rating is referenced by a specific letter, for example 'S' which indicates the maximum speed (118 mph) at which the tyre can travel whilst carrying its maximum load.

Below is a conversion chart which displays the maximum speeds per letter in both miles and kilometres per hour:

TYRE TYPE	MPH	KM/H
M	81	130
P	93	150
Q	99	160
R	106	170
S	112	180
T	118	190







**Davanti DX640**  
AIA Racing School, Portugal



**Davanti Terratoura A/T** - Edd Cobley,  
Davanti Ambassador



**Davanti Terratoura A/T** - Tyre testing  
Rockingham, UK



**LEADING THE WAY**  
[www.davanti-tyres.com](http://www.davanti-tyres.com)



**Davanti DX640**  
AIA Racing School, Portugal



Davanti Terratoura A/T - Tyre testing



Davanti Wintoura SUV - Tyre testing



**LEADING THE WAY**  
[www.davanti-tyres.com](http://www.davanti-tyres.com)



Davanti Protoura Sport - Tyre testing







Davanti tyres combine expert engineering, advanced manufacturing processes, extensive testing and progressive development.

Our European-led product testing goes far beyond mandatory testing.

We put our tyres through rigorous testing disciplines to ensure they deliver safe and predictable handling and a comfortable drive.

Our tyres allow drivers to get the most out of their vehicles' performance capabilities, and therefore deliver excellent value.

Follow us



Discover Davanti



TERRATOURA A/T PAGE 40

## OUR PARTNERSHIPS MATTER

As a brand that prides itself on Leading the Way, our partnerships are much more than simply branding. We work with our partners to deliver incredible, once in a lifetime opportunities for Davanti customers and dealers.



EVERTON FOOTBALL CLUB



SIR CHRIS HOY



DAN ZELOS



AIA RACING SCHOOL



EDD COBLEY



WIGAN WARRIORS



STERLING  
AUTOMOTIVE